

ORIGINAL RESEARCH

Prognostic Value and Relative Cutoffs of Triglycerides Predicting Cardiovascular Outcome in a Large Regional-Based Italian Database

Valérie Tikhonoff , MD, PhD*; Edoardo Casiglia , MD*; Agostino Virdis , MD; Guido Grassi , MD; Fabio Angeli , MD; Marcello Arca , MD; Carlo M. Barbagallo, MD; Michele Bombelli , MD; Federica Cappelli , MSc; Rosario Cianci , MD; Arrigo F. G. Cicero , MD, PhD; Massimo Cirillo , MD; Pietro Cirillo , MD, PhD; Raffaella Dell'oro, MD; Lanfranco D'elia , MD, PhD; Giovambattista Desideri , MD; Claudio Ferri , MD; Ferruccio Galletti , MD, PhD; Loreto Gesualdo , MD; Cristina Giannattasio , MD, PhD; Guido Iaccarino , MD; Francesca Mallamaci , MD; Alessandro Maloberti , MD, PhD; Stefano Masi , MD, PhD; Maria Masulli , MD, PhD; Alberto Mazza , MD, PhD; Alessandro Mengozzi , MD; Maria Lorenza Muiesan , MD; Pietro Nazzaro, MD; Paolo Palatini , MD; Gianfranco Parati , MD; Roberto Pontremoli , MD; Fosca Quarti-Trevano , MD, PhD; Marcello Rattazzi , MD, PhD; Gianpaolo Reboldi , MD, PhD; Giulia Rivasi , MD; Elisa Russo , MD; Massimo Salvetti , MD; Pier Luigi Temporelli , MD; Giuliano Tocci , MD, PhD; Andrea Ungar , MD, PhD; Paolo Verdecchia , MD; Francesca Viazzi , MD, PhD; Massimo Volpe , MD; Claudio Borghi , MD

BACKGROUND: Despite longstanding epidemiologic data on the association between increased serum triglycerides and cardiovascular events, the exact level at which risk begins to rise is unclear. The Working Group on Uric Acid and Cardiovascular Risk of the Italian Society of Hypertension has conceived a protocol aimed at searching for the prognostic cutoff value of triglycerides in predicting cardiovascular events in a large regional-based Italian cohort.

METHODS AND RESULTS: Among 14 189 subjects aged 18 to 95 years followed-up for 11.2 (5.3–13.2) years, the prognostic cutoff value of triglycerides, able to discriminate combined cardiovascular events, was identified by means of receiver operating characteristic curve. The conventional (150 mg/dL) and the prognostic cutoff values of triglycerides were used as independent predictors in separate multivariable Cox regression models adjusted for age, sex, body mass index, total and high-density lipoprotein cholesterol, serum uric acid, arterial hypertension, diabetes, chronic renal disease, smoking habit, and use of antihypertensive and lipid-lowering drugs. During 139 375 person-years of follow-up, 1601 participants experienced cardiovascular events. Receiver operating characteristic curve showed that 89 mg/dL (95% CI, 75.8–103.3, sensitivity 76.6, specificity 34.1, $P < 0.0001$) was the prognostic cutoff value for cardiovascular events. Both cutoff values of triglycerides, the conventional and the newly identified, were accepted as multivariate predictors in separate Cox analyses, the hazard ratios being 1.211 (95% CI, 1.063–1.378, $P = 0.004$) and 1.150 (95% CI, 1.021–1.295, $P = 0.02$), respectively.

CONCLUSIONS: Lower (89 mg/dL) than conventional (150 mg/dL) prognostic cutoff value of triglycerides for cardiovascular events does exist and is associated with increased cardiovascular risk in an Italian cohort.

Correspondence to: Valérie Tikhonoff, MD, PhD, Department of Medicine (DIMED), Università degli Studi di Padova, Via Giustiniani 2 – 35128 Padua, Italy. Email: valerie.tikhonoff@unipd.it

*V. Tikhonoff and E. Casiglia contributed equally.

Preprint posted on MedRxiv June 29, 2023. doi: <https://doi.org/10.1101/2023.06.23.23291840>.

This article was sent to Daniel Edmundowicz, MD, Guest Editor, for review by expert referees, editorial decision, and final disposition.

Supplemental Material is available at <https://www.ahajournals.org/doi/suppl/10.1161/JAHA.123.030319>

For Sources of Funding and Disclosures, see page 8.

© 2024 The Authors. Published on behalf of the American Heart Association, Inc., by Wiley. This is an open access article under the terms of the [Creative Commons Attribution-NonCommercial-NoDerivs](https://creativecommons.org/licenses/by-nc-nd/4.0/) License, which permits use and distribution in any medium, provided the original work is properly cited, the use is non-commercial and no modifications or adaptations are made.

JAHA is available at: www.ahajournals.org/journal/jaha

Key Words: cardiovascular disease ■ cutoff value ■ hypertriglyceridemia ■ mortality ■ triglyceride

CLINICAL PERSPECTIVE

What Is New?

- Evidence indicates that elevated triglyceride levels are related to cardiovascular events and mortality. However, the exact level at which risk begins to increase is unclear.
- In a large cohort of European subjects, a prognostic cutoff value of triglycerides lower (89 mg/dL) than the conventional one (150 mg/dL) was identified.

What Are the Clinical Implications?

- Triglyceride measurement must be considered an important part of the routine evaluation to manage cardiovascular risk.
- In primary prevention, subjects with triglycerides >89 mg/dL should be carefully observed to prevent possible cardiovascular events.

Nonstandard Abbreviations and Acronyms

URRAH Uric Acid Right for Heart Health

The global burden of dyslipidemia has increased over the past 30 years, with elevated plasma low-density lipoprotein (LDL) cholesterol levels being the eighth most important risk factor for death in 2019.¹ In high-income countries (mostly in Europe and North America), levels of LDL have been in steady decline in response to improvements in lifestyle and an increase in the use of lipid-lowering drugs.^{2,3} Based on risk stratification, LDL cholesterol lowering is addressed aggressively by statin and by nonstatin therapies (ezetimibe, inhibitors of proprotein convertase subtilisin/kexin type 9, bempedoic acid, evinacumab, and inclisiran) today.^{4,5} Despite reduction in cardiovascular mortality over the past 2 decades, the number of deaths remains high and a residual risk persists.⁶ This has compelled an interest in individuals with residually elevated triglyceride, who have higher concentrations of atherogenic cholesterol carried by circulating triglyceride-rich lipoproteins.⁷⁻¹⁰ It became more and more clear that if LDL is well controlled and non-high-density lipoprotein (HDL) cholesterol is not well controlled, the culprit is triglyceride-rich lipoprotein, which is highly atherogenic.^{9,10}

The interest on the association between elevated triglycerides and cardiovascular events has fluctuated

over the past many years, driven by changes in the evidence base that suggests that these either cause atherosclerotic cardiovascular disease or simply represent innocent bystanders.⁸ Mendelian randomization studies have provided causal evidence for the role of triglyceride-mediated pathways in coronary heart disease incidence.¹¹ In the large meta-analysis from the Emerging Risk Factors Collaboration study, comprising 302 430 people without an initial vascular disease compiled from 68 long-term prospective studies of Europe and North America, a total of 12 785 cases of coronary heart disease were recorded from a total of 2.79 million person-years of follow-up, showing a hazard ratio (HR) for nonfatal myocardial infarction and coronary heart disease death for triglycerides of 1.37 (95% CI, 1.31–1.42) after adjustment for nonlipid risk factors.¹² Raposeiras-Roubin et al showed in a prospective cohort study including 3754 middle-aged individuals with low to moderate cardiovascular risk that triglyceride levels ≥ 150 mg/dL were associated with subclinical atherosclerosis and vascular inflammation, even in participants with normal LDL-C levels.¹³

Despite epidemiologic data demonstrating the association between elevations in serum triglycerides and cardiovascular disease,¹⁴ the exact level at which risk begins to increase is unclear. The first lipid guidelines for cardiovascular prevention defined elevated triglycerides as >250 mg/dL.¹⁵ Since then, clinical trials evaluating the impact of triglyceride-lowering therapies have used a cutoff around 150 mg/dL.¹⁶ Therefore, in the recent European Society of Cardiology guidelines, the treatment target and goal on cardiovascular prevention indicates the conventional cutoff of 150 mg/dL.⁴ However, specific prognostic cutoff value of triglycerides around which the rise of incident cardiovascular events associated with triglyceride changes appears has not been precisely evaluated in a European cohort. The Working Group on Uric Acid and Cardiovascular Risk of the Italian Society of Hypertension has conceived and designed an ad hoc protocol aimed at searching for prognostic cutoff values of triglycerides in predicting cardiovascular events in a large regional-based Italian cohort of men and women.

METHODS

Database and Study Protocol

The database called URRAH (Uric Acid Right for Heart Health) involves data on subjects aged 18 to 95 years collected on a regional community basis from all of Italy with a median follow-up period of 11.2 years

(interquartile range from 5.3–13.2 years) up to July 31, 2017. The study protocol has been previously extensively described,^{17–19} and the Strengthening the Reporting of Observational Studies in Epidemiology cohort checklist was used to write the article.²⁰ The data that support the findings of this study are available from the corresponding author upon reasonable request. In brief, a nationwide Italian database was built by collecting data on subjects from representative cohorts having serum uric acid measurement and complete information about several variables, including outcomes. In the present analyses, 14 189 subjects were considered. For all subjects, a standardized set of items was recorded, including demographics; anthropometric measures; metabolic parameters; smoking habit; systolic and diastolic arterial blood pressure; renal function; history of cardiovascular, renal, and brain disease; concomitant treatments; and outcomes. Hypertension was defined by the presence of at least 2 blood pressure recordings ≥ 140 or ≥ 90 mmHg or treatment with antihypertensive medications. Diabetes was defined if blood glucose was ≥ 126 mg/dL at fast or ≥ 200 mg/dL 2 hours after 75 g oral glucose load or if glycated hemoglobin was ≥ 48 mmol/mol. Kidney function was evaluated through estimation of the glomerular filtration rate, using a standardized serum creatinine assay and according to the Chronic Kidney Disease Epidemiology Collaboration equation.²¹ Chronic kidney disease was defined for estimated glomerular filtration rate values < 60 mL/min per 1.73 m^2 . Procedures for taking and preparing blood specimens and laboratory analysis were standardized. Blood specimens were taken by venipuncture after an overnight fast. Specimens were placed in edetic acid tubes in an ice bath. Plasma was then separated in a refrigerated centrifuge at 4°C within 2 hours after collection; separated plasma was transferred into cryovials and frozen for later measurement of lipid concentration.

Ethics

The study data were collected routinely or ad hoc in previously authorized studies. Subjects underwent no extra tests or interventions, and there was no impact on subjects' care or outcome. The study was performed according to the Declaration of Helsinki for Human Research (41st World Medical Assembly, 1990). The processing of the patients' personal data collected in this study complies with the European Directive on the Privacy of Data. All data to be collected, stored and processed are anonymized, and all study-related documents are retained in a secure location. No personal information is stored on local personal computers. Approval was sought from the Ethical Committee of the Coordinating Center at the Division of Internal Medicine of the University of Bologna (No. 77/2018/

Oss/AOUBo). Informed consent was obtained from all subjects at recruitment.

Outcome

According to the study protocol,¹⁸ incident events due to acute myocardial infarction, angina pectoris, heart failure, stroke, transient ischemic attack, and hypertensive complications were taken into consideration during the follow-up (see Table S1 for *International Classification of Diseases, Tenth Revision (ICD-10)* codes). Events were double-checked with hospital and physicians' files.

Statistical Analysis

General Description

The SAS package version 9.4 (SAS Institute, Cary, NC) was used for statistical analysis. To calculate the sample size for the comparison of the area under receiver operating characteristic (ROC) curve (AUC) for 20-year follow-up based on the AUC of 0.576 as observed in other studies²² with a null hypothesis of 0.5, we considered $\alpha=0.05$, power $(1-\beta)=0.80$ and a ratio of sample sizes in positive/negative groups of 1:8 (11% of cardiovascular disease [CVD] events). The Kolmogorov–Smirnov test was used to determine if all variables were normally distributed. Continuous variables were expressed as mean \pm SD and compared among classes or categories by the analysis of covariance adjusted for proper confounders and followed by the Bonferroni's post hoc test. Categorical variables were compared by means of the Pearson χ^2 test. The null hypothesis was rejected for values of $P < 0.05$.

Preliminary Cox Analysis

Multivariable Cox proportional hazards regression models, having all combined cardiovascular events (fatal+nonfatal) as dependent variable and adjusted for plausible confounders (age, sex, body mass index, serum uric acid, serum HDL-cholesterol, serum non-HDL cholesterol, arterial hypertension, diabetes, chronic renal disease, smoking habit, alcohol consumption, and use of lipid-lowering drugs), were used to search for an association between triglycerides as a continuous variable and cardiovascular events. We tested the interactions of triglycerides with sex, diabetes, arterial hypertension, and ethanol intake by incorporating corresponding interaction terms in the analysis. HRs with 95% CIs were produced. The null hypothesis was rejected for values of $P < 0.05$.

Univariate Prognostic Cutoff Values

The ROC curves method was used to search for prognostic cutoff of triglycerides for cardiovascular events in

the whole database. The De Long et al method²³ was used. Ratio of cases in the positive group (prevalence), sensitivity, and specificity were calculated. ROC curve was generated in the whole database, and a prognostic cutoff value was identified as the curve point nearest to 100% of axis of the ordinates.²⁴ In practical terms, this was made by identifying the triglycerides value associated to the highest values of the sum sensitivity+specificity. Youden's index²⁵ defined for all points of ROC curves was used as a criterion for selecting the optimum cutoff. The cutoff point identified is the value corresponding with maximum of the Youden index $J = \max[Se_i + SP_i - 1]$, where Se_i and SP_i are the sensitivity and specificity over all possible threshold values. The AUC was also shown for each ROC curves analysis.²⁶ The significance of AUC is tested using the Wald test statistic (Z statistic). In sensitivity analysis, we also validated the ROC curves in the survival models,²⁷ namely the integrated time-dependent AUC and the designated ROC curves, and the AUC at 15 and 20 years of follow-up.

Validation of the Conventional and Prognostic Cutoff Values and HR of Being Over Cutoff

The conventional (≥ 150 mg/dl) and the prognostic (identified by mean of the ROC curve) cutoff values of triglycerides were used as independent variables in separate multivariable Cox proportional hazards regression models adjusted for the confounders already

identified, having combined cardiovascular events as time-to-event dependent variable in the whole database. A cutoff value identified via the ROC curves method was considered as valid if accepted in the model being the null hypothesis rejected, otherwise it was considered a false cutoff. The corresponding HRs with 95% CI were obtained. The conventional (≥ 150 mg/dL) and prognostic validated cutoff values were used in the whole database to stratify combined cardiovascular events in descriptive analysis and for generating outcome curves according to the Kaplan–Meier non-parametric estimator of limit product. Log-rank tests were used to assess differences between curves.

RESULTS

Descriptive Statistics

The general characteristics of the 14 189 subjects are shown in Table 1, also showing men and women separately. Very few participants (3.8%) were on lipid-lowering therapy. Triglyceride was nonnormally distributed in the whole database with a median triglyceride level of 110 (25th–75th percentile 80–154) (Figure 1).

During 139 375 person-years of follow-up, 1601 participants experienced cardiovascular events (11.4 per 1000 age-adjusted person-years), 747 men (12.1 per 1000 age-adjusted person-years) and 854 women (11.0 per 1000 age-adjusted person-years).

Table 1. General Characteristics of the Study Participants Also Showing Sex Stratification

Variables	Whole database (n=14 189)	Female sex (n=7912)	Male sex (n=6277)	P values between sexes
Triglycerides, mg/dL	128.9 (77.5)	125.0 (71.8)	133.8 (84.0)	0.008
Age, y	59.1 (15.3)	59.3 (15.2)	58.8 (14.8)	0.003
Body mass index, kg/m ²	26.7 (4.3)	26.7 (4.6)	26.6 (3.9)	0.06
Waist circumference, cm	88.9 (12.5)	84.7 (12.4)	93.9 (10.7)	<0.0001
Systolic BP, mmHg	144.3 (24.6)	144.6 (25.5)	144.1 (23.4)	0.24
Diastolic BP, mmHg	84.6 (12.7)	84.6 (13.1)	84.7 (12.2)	0.58
Heart rate, bpm	71.2 (11.4)	72.3 (10.8)	69.8 (11.9)	<0.0001
Serum creatinine, mg/dL	0.93 (0.23)	0.89 (0.23)	0.98 (0.21)	<0.0001
Serum glucose, mg/dL	99.2 (25.6)	99.1 (27.1)	99.3 (23.5)	0.67
Serum uric acid, mg/dL	4.96 (1.41)	4.69 (1.33)	5.30 (1.42)	<0.0001
Total cholesterol, mg/dL	216.3 (38.7)	218.1 (38.6)	213.9 (38.7)	<0.0001
HDL cholesterol, mg/dL	53.4 (15.0)	55.4 (15.4)	50.7 (14.0)	<0.0001
Non-HDL cholesterol, mg/dL	162.9 (39.2)	162.7 (39.0)	163.2 (39.4)	0.37
Smoking habit (yes, %)	35.2	24.2	49.1	<0.0001
Ethanol intake (yes, %)	62.4	58.3	67.6	<0.0001
Diabetes (yes, %)	10.0	10.2	9.7	0.38
Hypertension (yes, %)	65.4	65.6	65.1	0.50
Chronic kidney disease (yes, %)	21.1	22.4	19.5	<0.0001
Antihypertensive use (yes, %)	35.1	35.4	34.8	0.51
Lipid-lowering drugs (yes, %)	3.8	3.7	4.0	0.33

Continuous variables are expressed as mean (SD). Categorical variables are in %. BP indicates arterial blood pressure; and HDL, high-density-lipoprotein.

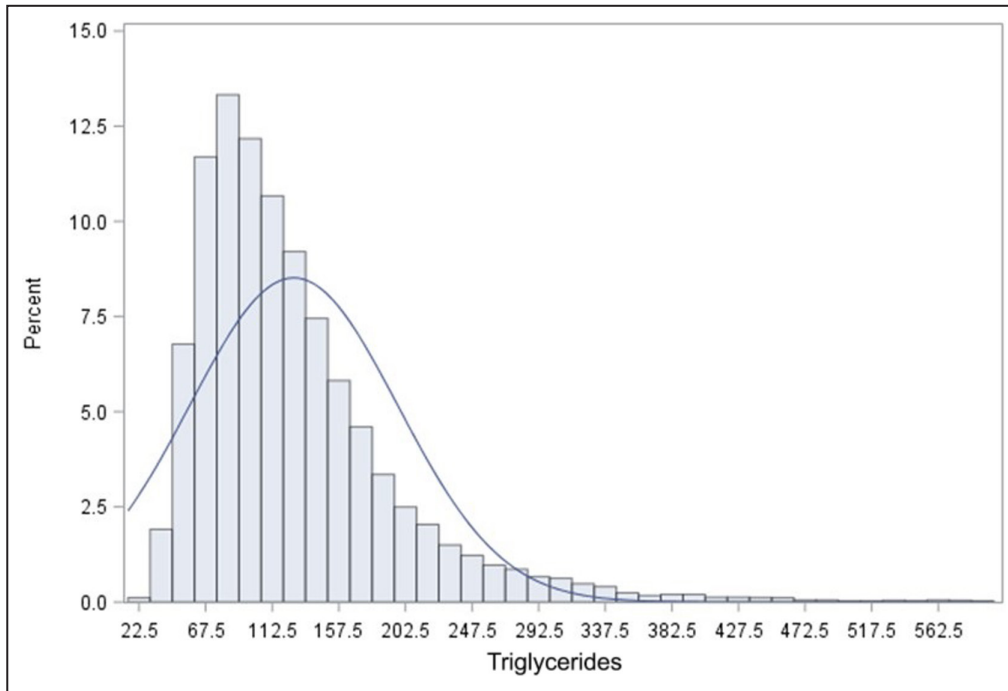


Figure 1. Distribution of baseline serum triglycerides in the whole database.

Power analysis showed that the minimum sample size required (positive and negative groups together) was 1566 subjects. Therefore, the number of subjects in the database (n=14 189) represented a sample largely sufficient to avoid β error.

Multivariable Analysis

Preliminary Cox models having combined cerebrovascular events as dependent variable showed that, in the whole cohort, log transformed triglyceride as a continuous variable was a significant predictor of cardiovascular events (HR, 1.173 [95% CI, 1.035–1.330], $P=0.01$) with significant confounding factors age, body mass index, serum HDL cholesterol, serum uric acid, diabetes, arterial hypertension, alcohol consumption, and use of lipid-lowering drugs (Table 2). Four interaction terms were tested (triglyceride \times sex, triglyceride \times diabetes, triglyceride \times arterial hypertension, triglyceride \times ethanol intake). Only triglycerides \times diabetes was significant when included in the model ($P=0.017$; HR, 1.329 [95% CI, 1.051–1.680]).

Search for Prognostic Cutoff Value of Triglycerides

ROC curve furnished plausible univariate cutoff value of triglyceride (>89mg/dL [95% CI, 75.8–103.3], sensitivity 76.6, specificity 34.1) as prognostic cutoff value for cardiovascular events. When the conventional triglyceride value of 150mg/dL is considered, the

sensitivity and specificity parameters are 33.0 and 74.3, respectively (Figure 2 and Table 3). In sensitivity analysis, the integrated time-dependent AUC was 0.569 (95% CI, 0.561–0.578; Z statistic 9.521, $P<0.0001$ for null hypothesis, AUC=0.50), and each time-dependent AUC was 0.574 for 15 years of follow-up and 0.601 for 20 years.

Table 2. Cox Model for Combined Cardiovascular Events Using Serum Triglycerides as a Continuous Independent Variable in the Whole Cohort (n=14 189)

Independent variables	HR	95% CI	P value
Serum triglycerides, mg/dL	1.173	1.035–1.330	0.01
Age, y	1.061	1.056–1.067	<0.0001
Sex (1=men, 0=women)	1.025	0.919–1.144	0.66
Body mass index, kg/m ²	0.970	0.957–0.982	<0.0001
HDL cholesterol, mg/dL	0.992	0.989–0.996	<0.0001
Non-HDL cholesterol, mg/dL	0.999	0.998–1.001	0.44
Serum uric acid, mg/dL	2.047	1.681–2.492	<0.0001
Diabetes (1=yes, 0=no)	1.908	1.689–2.156	<0.0001
Hypertension (1=yes, 0=no)	1.469	1.281–1.684	<0.0001
Chronic kidney disease (1=yes, 0=no)	0.910	0.808–1.025	0.12
Smoking (1=yes, 0=no)	1.051	0.936–1.180	0.40
Ethanol (1=yes, 0=no)	1.380	1.216–1.566	<0.0001
Lipid-lowering drugs (1=yes, 0=no)	0.621	0.477–0.809	<0.001

HDL indicates high-density-lipoprotein; and HR, hazard ratios.

Downloaded from http://ahajournals.org by on September 19, 2024

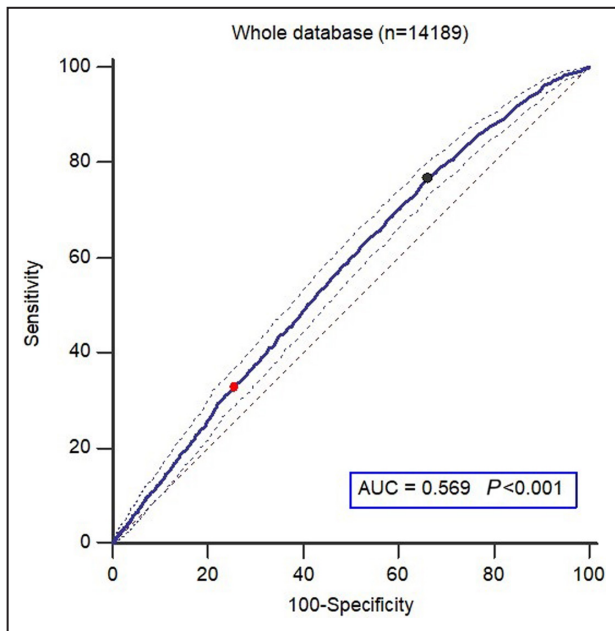


Figure 2. ROC curves of combined cardiovascular events. 95% CIs are shown (thin lines). The black point corresponds to the criterion >89 mg/dL (sensitivity 76.6, specificity 34.1) and the red point corresponds to the criterion >150 mg/dL (sensitivity 33.0, specificity 74.3). AUC indicates area under the curve; and ROC, receiver-operator-characteristic; *P*, *P* value of the null hypothesis AUC=0.5.

Validation of Conventional and Prognostic Cutoff Values and HRs of Being Over Cutoff

The conventional (≥ 150 mg/dL) and the identified by the ROC curve (≥ 89 mg/dL) cutoff values of triglyceride were both accepted as predictors in separate multi-variable Cox regression models, adjusted for the confounders already identified, demonstrating that being over the cutoff values led to higher risk with the HR 1.150 (95% CI, 1.021–1.295, *P*=0.02) and HR 1.211 (95% CI, 1.063–1.378, *P*=0.004), respectively (Table 4 and 5). Kaplan–Meier curves after stratification according to cutoff values of triglyceride are shown in Figure 3. The curves of subjects having triglyceride \leq cutoff and triglyceride $>$ cutoff were clearly separate both for conventional (150 mg/dL) and prognostic (89 mg/dL) cutoff values.

Table 3. ROC Curve Parameters of the Cutoff Value for Combined Cardiovascular Events in a Regional Community-Based Cohort of 14 189 Subjects

Cutoff	>89 mg/dL	>150 mg/dL
Youden index (CI)	0.1064 (0.0772–0.1233)	...
Sensitivity% (CI)	76.6 (74.4–78.6)	33.0 (30.7–35.4)
Specificity% (CI)	34.1 (33.2–34.9)	74.29 (73.5–75.0)

Table 4. Hazard Ratios of the Variable “Over Cutoff Value of Serum Triglycerides (≥ 150 mg/dL)” for Combined Cardiovascular Events in the Whole Database

Independent variables	HR	95% CI	<i>P</i> value
Specific cutoff of triglycerides (≥ 150 mg/dL)	1.150	1.021–1.295	0.02
Age, y	1.062	1.057–1.068	<0.0001
Sex (1=men, 0=women)	1.028	0.921–1.146	0.63
Body mass index, kg/m ²	0.968	0.956–0.981	<0.0001
HDL cholesterol, mg/dL	0.992	0.989–0.996	<0.0001
Non-HDL cholesterol, mg/dL	0.999	0.998–1.001	0.72
Serum uric acid, mg/dL	2.005	1.650–2.436	<0.0001
Diabetes (1=yes, 0=no)	1.935	1.727–2.183	<0.0001
Hypertension (1=yes, 0=no)	1.317	1.141–1.523	0.0002
Chronic kidney disease (1=yes, 0=no)	0.838	0.740–0.949	0.005
Smoking (1=yes, 0=no)	1.047	0.936–1.175	0.44
Ethanol (1=yes, 0=no)	1.444	1.270–1.638	<0.0001
Statin use (1=yes, 0=no)	0.598	0.458–0.779	<0.0001

HDL indicates high-density-lipoprotein; and HR, hazard ratios.

DISCUSSION

First, the results of this present analysis confirm that, in a large sample with a long follow-up, fasting triglyceride is an independent risk factor for cardiovascular events. Adjusting for factors associated with both cardiovascular events and triglyceride such as diabetes, body mass index, alcohol use, and HDL and non-HDL cholesterol attenuated but did not fully account for the association between triglycerids and cardiovascular events. This is consistent with a series of studies showing a positive association of incident cardiovascular events with triglyceride both fasting and nonfasting; in particular 3 large meta-analyses provided adjusted odds ratio values ranging from 1.57 (95% CI, 1.10–2.24) to 1.80 (95% CI, 1.49–2.19) when individuals with triglycerides in the top tertile were compared with those with triglycerides in the bottom tertile.^{28–31} Unlike our study, a number of studies have found that the association between triglycerides and cardiovascular risk is attenuated once adjusted for other lipid parameters, including HDL-C and non-HDL-C. An analysis conducted by the Emerging Risk Factors Collaboration (*n*=302 430) demonstrated that the HR for coronary heart disease as a result of elevated triglyceride was 1.37 (95% CI, 1.31–1.42) when adjusted for non-lipid factors and became nonsignificant (0.99 [95% CI, 0.94–1.05]) when adjusted for HDL cholesterol and non-HDL cholesterol (0.99 [95% CI, 0.94–1.05]).¹² Elevated triglyceride levels are closely associated with higher levels of non-HDL cholesterol and low levels of HDL cholesterol³² and this may explain why this association is weakened after adjustment for these parameters.

Table 5. Hazard Ratios of the Variable “Over Cutoff Value of Serum Triglycerides (≥89 mg/dL)” for Combined Cardiovascular Events in the Whole Database

Independent variables	HR	95% CI	P value
Specific cutoff of triglycerides (≥89 mg/dL)	1.211	1.063–1.378	0.004
Age, y	1.062	1.057–1.068	<0.0001
Sex (1=men, 0=women)	1.028	0.921–1.146	0.62
Body mass index, kg/m ²	0.968	0.956–0.981	<0.0001
HDL cholesterol, mg/dL	0.992	0.989–0.996	<0.0001
Non-HDL cholesterol, mg/dL	0.999	0.998–1.001	0.54
Serum uric acid, mg/dL	1.993	1.639–2.423	<0.0001
Diabetes (1=yes, 0=no)	1.942	1.719–2.193	<0.0001
Hypertension (1=yes, 0=no)	1.318	1.141–1.523	0.0002
Chronic kidney disease (1=yes, 0=no)	0.838	0.740–0.949	0.005
Smoking (1=yes, 0=no)	1.051	0.936–1.180	0.40
Ethanol (1=yes, 0=no)	1.442	1.270–1.638	<0.0001
Statin use (1=yes, 0=no)	0.595	0.456–0.777	<0.0001

HDL indicates high-density-lipoprotein; and HR, hazard ratios.

No significant interaction was found according to sex. This finding suggests that the risk associated with increasing triglycerides was similar in men and women, excluding the need to identify different cut-offs of triglycerides by sex for a better risk prediction. Other observational data have demonstrated that triglycerides are more strongly associated with CVD risk in women than men. However, importantly, in both men and women, increasing triglycerides were associated with increased CVD risk even among those with triglycerides well below 150 mg/dL.³³

In the past 25 years, other authors have demonstrated a lower cut-point for triglycerides (100 mg/dL) to

be associated with increased risk of primary and secondary cardiovascular events.^{34–36} In the present study, the prognostic cutoff value of triglycerides able to identify the subjects at risk of developing cardiovascular events was 89 mg/dL in the whole cohort: being over the cutoff, significantly led to HR >1 of developing a cardiovascular event. Therefore, our findings expand the role of triglycerides in predicting cardiovascular risk. Guidelines acknowledge that a fasting triglyceride level of <150 mg/dL is desirable.^{4,37} Indeed, the American Heart Association/American College of Cardiology/multisociety cholesterol guideline recommended the use of elevated triglycerides as a “risk-enhancing factor” in primary cardiovascular prevention and recommended optimizing diet and lifestyle as the first step. Emphasis on weight loss (5%–10% reduction in body weight) through healthy diet and physical activity (at least moderate 150 min/wk or vigorous 75 min/wk) can substantially lower triglycerides levels by 20% to 50%. A healthy dietary pattern includes lean protein, fish, fresh fruits and vegetables, legumes, avoidance of refined foods with high glycemic index and added sugars, and restriction of alcohol intake.³⁶ If elevated triglyceride or non-HDL-C levels remain following aggressive lifestyle intervention and statin therapy, guidelines recommend the use of triglycerides-lowering agents.^{4,37,38} The JELIS (Japan EPA Lipid Intervention Study) trial and the REDUCE-IT (Reduction of Cardiovascular Events With Icosapent Ethyl–Intervention Trial) trial used icosapent ethyl, a prescription grade purified eicosapentaenoic acid.^{39,40} The JELIS trial looked at more than 18000 individuals and showed that eicosapentaenoic acid reduced major coronary events by 19% compared with the control group.³⁹ The REDUCE-IT trial included more than 8000 patients with CVD or diabetes with additional cardiovascular risk factors.⁴⁰ All participants were on statins with

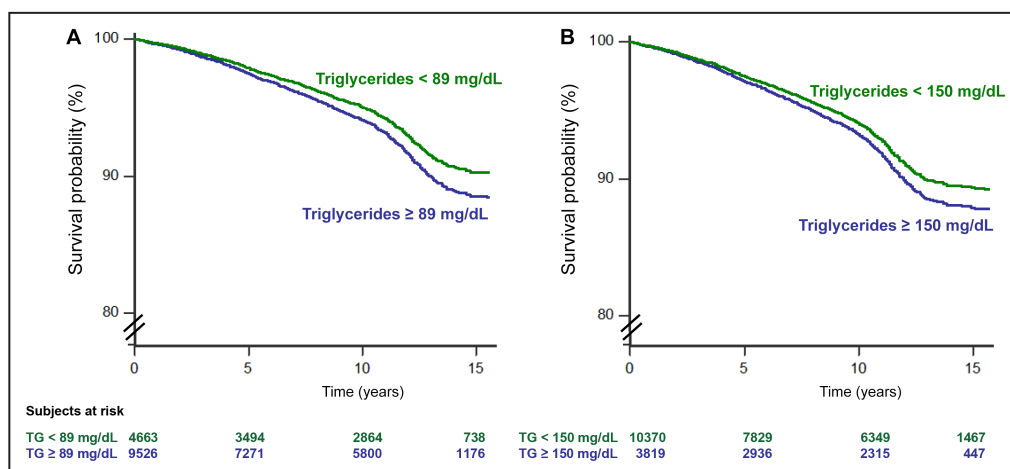


Figure 3. Kaplan–Meier survival curves for combined cardiovascular events for the identified cutoff value of triglycerides 89 mg/dL (A) and the conventional cutoff value of triglycerides 150 mg/dL (B).

Trends of subjects having serum triglycerides > cutoff (blue line) and <cutoff (red line) are shown. Numbers of subjects at risk are shown in the 2 footnotes. Values of P indicate statistical difference vs reference.

Downloaded from <http://ahajournals.org> by on September 19, 2024

LDLs below 100mg/dL and triglycerides between 135 and 499mg/dL (with a mean triglyceride level of 216mg/dL). The patients were randomly assigned to icosapent ethyl 4 g daily or mineral oil. The composite cardiovascular end point was reduced by 25% over ~5 years, with a number needed to treat of 21.

The main strength of the study described here is to have determined on a large Italian nationwide database with a long-lasting follow-up a clear prognostic cutoff of triglycerides, identified by the ROC curves methods and validated in multivariate models, able to identify subjects at higher cardiovascular risk. Further, if a test is used for the purpose of screening in an epidemiological context, then a cutoff value with a higher sensitivity and negative predictive value must be considered.⁴¹ The limitations are represented by the fact that data are partially derived from a selected sample of patients referred by general practitioners to specialized centers, an underestimation of morbid events is quite likely as in other cohort studies, the design was fit to demonstrate an association but not a causality in the relationship between triglycerides and cardiovascular events, based on the univariate ROC curve, there is a large trade-off between sensitivity and specificity, and the analysis was based on a single triglycerides measurement without taking into consideration the dilution bias. A recent paper based on 15 792 study participants from the Atherosclerosis Risk in Communities and Framingham Offspring studies, using fasting triglyceride measurements across multiple exams over time, showed that the average of several triglyceride readings provided incremental improvements for the prediction of CVD relative to a single triglyceride measurement.³³ However, regardless of the method of measurement, higher triglycerides were associated with increased CVD risk, even at levels previously considered “optimal” (<150mg/dL). On the other hand, the collected database represents the largest number of Italian cases ever collected, and to our knowledge there is none more representative of the Italian situation. Furthermore, the present analysis was limited to Italian people and its results cannot be directly applied to other ethnicities. Validation of prediction requires testing in an independent data set as running analyses in the same data set will yield stronger associations than in an independent data set. Consequently, further studies are needed to confirm that the thresholds of triglycerides emerging from our analyses are valid also in general populations and in other ethnicities.

CONCLUSIONS

In conclusion, the Working Group on Uric Acid and Cardiovascular Risk of the Italian Society of Hypertension confirmed that, after adjusting for potential confounders, a lower than conventional prognostic

cutoff of triglycerides able to separate subjects at risk of developing cardiovascular events can be identified in an Italian cohort.

ARTICLE INFORMATION

Received April 2, 2023; accepted December 19, 2023.

Affiliations

Department of Medicine (V.T., M.R.) and Studium Patavinum, Department of Medicine (E.C., P.P.), Università degli Studi di Padova, Padua, Italy; Department of Clinical and Experimental Medicine, University of Pisa, Italy (A.V., F.C., S.M., A.M.); Department of Medicine and Surgery, University of Milano-Bicocca, Monza, Italy (G.G., M.B., R.D., F.Q.); Department of Medicine and Surgery, University of Insubria, Varese, Italy (F.A.); Department of Translational and Precision Medicine, Sapienza University of Rome, Rome, Italy (M.A., R.C.); Biomedical Department of Internal Medicine and Specialistics, University of Palermo, Italy (C.M.B.); Internal Medicine, Pio XI Hospital of Desio, ASST Brianza, Desio, Italy (M.B.); Hypertension and Cardiovascular Risk Research Center, Medical and Surgical Sciences Department, Alma Mater Studiorum University of Bologna, Bologna, Italy (A.F.C., C.B.); IRCCS AOU S.Orsola di Bologna, Bologna, Italy (A.F.C., C.B.); Department of Medicine “Scuola Medica Salernitana”, University of Salerno, Baronissi (SA), Italy (M.C.); Nephrology, Dialysis and Transplantation Unit, Department of Emergency and Organ Transplantation, “Aldo Moro” University of Bari, Bari, Italy (P.C., L.G.); Department of Clinical Medicine and Surgery, “Federico II” University of Naples Medical School, Naples, Italy (L.D., F.G., M.M.); Department of Life, Health and Environmental Sciences, University of L’Aquila, Italy (G.D., C.F.); Cardiology IV, “A.De Gasperi’s” Department, Niguarda Ca’ Granda Hospital, Milan, Italy (C.G., A.M.); School of Medicine and Surgery, Milano-Bicocca University, Milan, Italy (C.G., A.M.); Department of Advanced Biomedical Sciences, “Federico II” University of Naples, Naples, Italy (G.I.); CNR-IFC, Clinical Epidemiology of Renal Diseases and Hypertension, Reggio Cal Unit, Reggio Calabria, Italy (F.M.); Department of Internal Medicine, Santa Maria della Misericordia General Hospital, AULSS 5 Polesana, Rovigo, Italy (A.M.); Department of Clinical and Experimental Sciences, University of Brescia, Italy (M.L.M., M.S.); Department of Medical Basic Sciences, Neurosciences and Sense Organs, University of Bari Medical School, Bari, Italy (P.N.); S. Luca Hospital, Istituto Auxologico Italiano and University of Milan-Bicocca, Milan, Italy (G.P.); Department of Internal Medicine, University of Genoa, and Policlinico San Martino, Genoa, Italy (R.P., E.R., F.V.); Medicina Interna I, Ca’ Foncello University Hospital, Treviso, Italy (M.R.); Department of Medical and Surgical Science, University of Perugia, Italy (G.R.); Department of Geriatric and Intensive Care Medicine, Careggi Hospital and University of Florence, Italy (G.R., A.U.); Division of Cardiac Rehabilitation, Istituti Clinici Scientifici Maugeri, IRCCS, Gattico-Veruno, Italy (P.L.T.); Hypertension Unit, Division of Cardiology, Department of Clinical and Molecular Medicine, Faculty of Medicine and Psychology, University of Rome Sapienza, Sant’Andrea Hospital, Rome, Italy (G.T., M.V.); Hospital S. Maria della Misericordia, Perugia, Italy (P.V.); and IRCCS San Raffaele Rome, Rome, Italy (M.V.).

Sources of Funding

This work has been conducted with an unrestricted grant from the Fondazione of the Italian Society of Hypertension (grant: MIOL).

Disclosures

Dr Borghi has received research grant support from Menarini Corporate and Novartis Pharma; has served as a consultant for Novartis Pharma, Alfasigma, Grunenthal, Menarini Corporate, and Laboratoires Servier; and received lecturing fees from Laboratoires Servier, Takeda, Astellas, Teijin, Novartis Pharma, Berlin Chemie, and Sanofi. The authors declare no competing interests. The remaining authors have no disclosures to report.

Supplemental Material

Table S1

REFERENCES

1. Pirillo A, Casula M, Olmastroni E, Norata GD, Catapano AL. Global epidemiology of dyslipidaemias. *Nat Rev Cardiol*. 2021;18:689–700. doi: 10.1038/s41569-021-00541-4

2. Barquera S, Pedroza-Tobías A, Medina C, Hernández-Barrera L, Bibbins-Domingo K, Lozano R, Moran AE. Global overview of the epidemiology of atherosclerotic cardiovascular disease. *Arch Med Res*. 2015;46:328–338. doi: [10.1016/j.arcmed.2015.06.006](https://doi.org/10.1016/j.arcmed.2015.06.006)
3. Hulmán A, Tabák AG, Nyári TA, Vistisen D, Kivimäki M, Brunner EJ, Witte DR. Effect of secular trends on age-related trajectories of cardiovascular risk factors: the Whitehall II longitudinal study 1985–2009. *Int J Epidemiol*. 2014;43:866–877. doi: [10.1093/ije/dyt279](https://doi.org/10.1093/ije/dyt279)
4. Mach F, Baigent C, Catapano AL, Koskinas KC, Casula M, Badimon L, Chapman MJ, De Backer GG, Delgado V, Ference BA, et al. 2019 ESC/EAS guidelines for the management of dyslipidaemias: lipid modification to reduce cardiovascular risk. *Eur Heart J*. 2020;41:111–188. doi: [10.1093/eurheartj/ehz455](https://doi.org/10.1093/eurheartj/ehz455)
5. Lloyd-Jones D, Morris P, Ballantyne CM, Birtcher KK, Covington AM, DePalma SM, Minissian MB, Orringer CE, Smith SC, Waring AA, et al. 2022 ACC expert consensus decision pathway on the role of nonstatin therapies for LDL-cholesterol lowering in the management of atherosclerotic cardiovascular disease risk. *J Am Coll Cardiol*. 2022;80:1366–1418. doi: [10.1016/j.jacc.2022.07.006](https://doi.org/10.1016/j.jacc.2022.07.006)
6. Tsao CW, Aday AW, Almarazooq ZI, Anderson CAM, Arora P, Avery CL, Baker-Smith CM, Beaton AZ, Boehme AK, Buxton AE, et al. Heart disease and stroke statistics–2023 update: a report from the American Heart Association. *Circulation*. 2023;147:e93–e621. doi: [10.1161/CIR.0000000000001123](https://doi.org/10.1161/CIR.0000000000001123)
7. Lawler PR, Kotrri G, Koh M, Goodman SG, Farkouh ME, Lee DS, Austin PC, Udell JA, Ko DT. Real-world risk of cardiovascular outcomes associated with hypertriglyceridaemia among individuals with atherosclerotic cardiovascular disease and potential eligibility for emerging therapies. *Eur Heart J*. 2020;41:86–94. doi: [10.1093/eurheartj/ehz767](https://doi.org/10.1093/eurheartj/ehz767)
8. Nordestgaard BG. Triglyceride-rich lipoproteins and atherosclerotic cardiovascular disease. *Circ Res*. 2016;118:547–563. doi: [10.1161/CIRCRESAHA.115.306249](https://doi.org/10.1161/CIRCRESAHA.115.306249)
9. Nordestgaard BG, Varbo A. Triglycerides and cardiovascular disease. *Lancet*. 2014;384:626–635. doi: [10.1016/S0140-6736\(14\)61177-6](https://doi.org/10.1016/S0140-6736(14)61177-6)
10. Varbo A, Nordestgaard BG. Remnant cholesterol and triglyceride-rich lipoproteins in atherosclerosis progression and cardiovascular disease. *Arterioscler Thromb Vasc Biol*. 2016;36:2133–2135. doi: [10.1161/ATVBAHA.116.308305](https://doi.org/10.1161/ATVBAHA.116.308305)
11. Holmes MV, Asselbergs FW, Palmer TM, Drenos F, Lanktree MB, Nelson CP, Dale CE, Padmanabhan S, Finan C, Swerdlow DI, et al. Mendelian randomization of blood lipids for coronary heart disease. *Eur Heart J*. 2015;36:539–555. doi: [10.1093/eurheartj/ehz571](https://doi.org/10.1093/eurheartj/ehz571)
12. Emerging Risk Factors Collaboration, Di Angelantonio E, Sarwar N, Perry P, Kaptoge S, Ray KK, Thompson A, Wood AM, Lewington S, Sattar N, et al. Major lipids, apolipoproteins, and risk of vascular disease. *JAMA*. 2009;302:1993–2000. doi: [10.1001/jama.2009.1619](https://doi.org/10.1001/jama.2009.1619)
13. Raposeiras-Roubin S, Rosselló X, Oliva B, Fernández-Friera L, Mendiguren JM, Andrés V, Bueno H, Sanz J, Martínez de Vega V, Abu-Assi E, et al. Triglycerides and residual atherosclerotic risk. *J Am Coll Cardiol*. 2021;77:3031–3041. doi: [10.1016/j.jacc.2021.04.059](https://doi.org/10.1016/j.jacc.2021.04.059)
14. Sandesara PB, Virani SS, Fazio S, Shapiro MD. The forgotten lipids: triglycerides, remnant cholesterol, and atherosclerotic cardiovascular disease risk. *Endocr Rev*. 2019;40:537–557. doi: [10.1210/er.2018-00184](https://doi.org/10.1210/er.2018-00184)
15. Assmann G, Schulte H, von Eckardstein A. Hypertriglyceridemia and elevated lipoprotein(a) are risk factors for major coronary events in middle-aged men. *Am J Cardiol*. 1996;77:1179–1184. doi: [10.1016/S0002-9149\(96\)00159-2](https://doi.org/10.1016/S0002-9149(96)00159-2)
16. Bezafibrate Infarction Prevention (BIP) Study. Secondary prevention by raising HDL cholesterol and reducing triglycerides in patients with coronary artery disease. *Circulation*. 2000;102:21–27. doi: [10.1161/01.CIR.102.1.21](https://doi.org/10.1161/01.CIR.102.1.21)
17. Desideri G, Virdis A, Casiglia E, Borghi C. Exploration into uric acid and cardiovascular disease: Uric Acid Right for heArt Health (URRAH) project. A study protocol for a retrospective observational study. *High Blood Press Cardiovasc Prev*. 2018;25:197–202. doi: [10.1007/s40292-018-0250-7](https://doi.org/10.1007/s40292-018-0250-7)
18. Virdis A, Masi S, Casiglia E, Tikhonoff V, Cicero AFG, Ungar A, Rivasi G, Salvetti M, Barbagallo CM, Bombelli M, et al. Identification of the uric acid thresholds predicting an increased total and cardiovascular mortality over 20 years. *Hypertension*. 2020;75:302–308. doi: [10.1161/HYPERTENSIONAHA.119.13643](https://doi.org/10.1161/HYPERTENSIONAHA.119.13643)
19. Casiglia E, Tikhonoff V, Virdis A, Masi S, Barbagallo CM, Bombelli M, Bruno B, Cicero AFG, Cirillo M, Cirillo P, et al. Serum uric acid and fatal myocardial infarction: detection of prognostic cut-off values: the URRAH (Uric Acid Right for Heart Health) study. *J Hypertens*. 2020;38:412–419. doi: [10.1097/HJH.0000000000002287](https://doi.org/10.1097/HJH.0000000000002287)
20. von Elm E, Altman DG, Egger M, Pocock SJ, Gotsche PC, Vandenbroucke JP. The Strengthening the Reporting of Observational Studies in Epidemiology (STROBE) Statement: Guidelines for Reporting Observational Studies. *Lancet*. 2007;370:1453–1457.
21. Levey AS, Stevens LA, Schmid CH, Zhang YL, Castro AF, Feldman HI, et al. A new equation to estimate glomerular filtration rate. *Ann Intern Med*. 2009;150:604–612. doi: [10.7326/0003-4819-150-9-200905050-00006](https://doi.org/10.7326/0003-4819-150-9-200905050-00006)
22. Imano H, Li J, Tanaka M, Yamagishi K, Muraki I, Umesawa M, Kiyama M, Kitamura A, Sato S, Iso H. Optimal cut-off points of nonfasting and fasting triglycerides for prediction of ischemic heart disease in Japanese general population: the Circulatory Risk in Communities Study (CIRCS). *J Atheroscler Thromb*. 2023;30:110–130. doi: [10.5551/jat.63358](https://doi.org/10.5551/jat.63358)
23. DeLong ER, DeLong DM, Clarke-Pearson DL. Comparing the areas under two or more correlated receiver operating characteristic curves: a nonparametric approach. *Biometrics*. 1988;44:837–845. doi: [10.2307/2531595](https://doi.org/10.2307/2531595)
24. Kamarudin AN, Cox T, Kolamunnage-Dona R. Time-dependent ROC curve analysis in medical research: current methods and applications. *BMC Med Res Methodol*. 2017;17:53. doi: [10.1186/s12874-017-0332-6](https://doi.org/10.1186/s12874-017-0332-6)
25. Youden WJ. Index for rating diagnostic tests. *Cancer*. 1950;3:32–35. doi: [10.1002/1097-0142\(1950\)3:1<32::AID-CNCR2820030106>3.0.CO;2-3](https://doi.org/10.1002/1097-0142(1950)3:1<32::AID-CNCR2820030106>3.0.CO;2-3)
26. Schisterman EF, Perkins NJ, Liu A, Bondell H. Optimal cut-point and its corresponding Youden index to discriminate individuals using pooled blood samples. *Epidemiology*. 2005;16:73–81. doi: [10.1097/01.ede.0000147512.81966.ba](https://doi.org/10.1097/01.ede.0000147512.81966.ba)
27. Uno H, Cai T, Tian L, Wei LW. Evaluating prediction rules for t-year survivors with censored regression models. *J Am Stat Assoc*. 2007;102:527–537. doi: [10.1198/016214507000000149](https://doi.org/10.1198/016214507000000149)
28. Hokanson JE, Austin MA. Plasma triglyceride level is a risk factor for cardiovascular disease independent of high-density lipoprotein cholesterol level: a meta-analysis of population-based prospective studies. *J Cardiovasc Risk*. 1996;3:213–219.
29. Sarwar N, Danesh J, Eiriksdottir G, Sigurdsson G, Wareham N, Bingham S, Boekholdt SM, Khaw KT, Gudnason V. Triglycerides and the risk of coronary heart disease: 10,158 incident cases among 262,525 participants in 29 Western prospective studies. *Circulation*. 2007;114:450–458. doi: [10.1161/CIRCULATIONAHA.106.637793](https://doi.org/10.1161/CIRCULATIONAHA.106.637793)
30. Patel A, Barzi F, Jamrozik K, Lam TH, Ueshima H, Whitlock G, Woodward M; Asia Pacific Cohort Studies Collaboration. Serum triglycerides as a risk factor for cardiovascular diseases in the Asia-Pacific region. *Circulation*. 2004;110:2678–2686. doi: [10.1161/01.CIR.0000145615.33955.83](https://doi.org/10.1161/01.CIR.0000145615.33955.83)
31. Nordestgaard BG, Benn M, Schnohr P, Tybjaerg-Hansen A. Nonfasting triglycerides and risk of myocardial infarction, ischemic heart disease, and death in men and women. *JAMA*. 2007;297:299–308. doi: [10.1001/jama.298.3.299](https://doi.org/10.1001/jama.298.3.299)
32. Chapman MJ, Ginsberg HN, Amarenco P, Andreotti F, Borén J, Catapano AL, Descamps OS, Fisher E, Kovonen PT, Kuvshinov JA, et al. Triglyceride-rich lipoproteins and high-density lipoprotein cholesterol in patients at high risk of cardiovascular disease: evidence and guidance for management. *Eur Heart J*. 2011;32:1345–1361. doi: [10.1093/eurheartj/ehz112](https://doi.org/10.1093/eurheartj/ehz112)
33. Abera T, Peterson ED, Pagidipati NJ, Mulder H, Wojdyla DM, Philip S, Granowitz C, Navar AM. The association between triglycerides and incident cardiovascular disease: what is "optimal"? *J Clin Lipidol*. 2020;14:438–447. doi: [10.1016/j.jacl.2020.04.009](https://doi.org/10.1016/j.jacl.2020.04.009)
34. Miller M, Seidler A, Moalemi A, Pearson TA. Normal triglyceride levels and coronary artery disease events: the Baltimore coronary observational long-term study. *J Am Coll Cardiol*. 1998;31:1252–1257. doi: [10.1016/S0735-1097\(98\)00083-7](https://doi.org/10.1016/S0735-1097(98)00083-7)
35. Schwartz GG, Abt M, Bao W, DeMicco D, Kallend D, Miller M, Mundl H, Olsson AG. Fasting triglycerides predict recurrent ischemic events in patients with acute coronary syndrome treated with statins. *J Am Coll Cardiol*. 2015;65:2267–2275. doi: [10.1016/j.jacc.2015.03.544](https://doi.org/10.1016/j.jacc.2015.03.544)
36. Klempfner R, Erez A, Sagit BZ, Goldenberg I, Fisman E, Kopel E, Shlomo N, Israel A, Tenenbaum A. Elevated triglyceride level is independently associated with increased all-cause mortality in patients with established coronary heart disease: twenty-two-year follow-up of the Bezafibrate infarction prevention study and registry. *Circ Cardiovasc Qual Outcomes*. 2016;9:100–108. doi: [10.1161/CIRCOUTCOMES.115.002104](https://doi.org/10.1161/CIRCOUTCOMES.115.002104)
37. Virani S, Morris P, Agarwala A, Ballantyne CM, Birtcher KK, Kris-Etherton PM, Ladden-Stirling AB, Miller M, Orringer CE, Stone NJ. 2021 ACC expert consensus decision pathway on the management of

-
- ASCVD risk reduction in patients with persistent hypertriglyceridemia. *J Am Coll Cardiol.* 2021;78:960–993. doi: [10.1016/j.jacc.2021.06.011](https://doi.org/10.1016/j.jacc.2021.06.011)
38. Koneru SC. Fellow's voice: hypertriglyceridemia: understanding the current guideline. *Am J Prev Cardiol.* 2022;9:100322. doi: [10.1016/j.ajpc.2022.100322](https://doi.org/10.1016/j.ajpc.2022.100322)
39. Yokoyama M, Origasa H, Matsuzaki M, Matsuzawa Y, Saito Y, Ishikawa Y, Oikawa S, Sasaki J, Hishida H, Itakura H, et al. Effects of eicosapentaenoic acid on major coronary events in hypercholesterolaemic patients (JELIS): a randomised open-label, blinded endpoint analysis. *Lancet.* 2007;369:1090–1098. doi: [10.1016/S0140-6736\(07\)60527-3](https://doi.org/10.1016/S0140-6736(07)60527-3)
40. Bhatt DL, Steg PG, Miller M, Brinton EA, Jacobson TA, Ketchum SB, Doyle RT Jr, Juliano RA, Jiao L, Granowitz C, et al. Cardiovascular risk reduction with icosapent ethyl for hypertriglyceridemia. *N Engl J Med.* 2019;380:11–22. doi: [10.1056/NEJMoa1812792](https://doi.org/10.1056/NEJMoa1812792)
41. Griner PF, Mayewski RJ, Mushlin AI, Greenland P. Selection and interpretation of diagnostic tests and procedures. Principles and applications. *Ann Intern Med.* 1981;94:557–592.