

ECOLOGY

When the wild things are: Defining mammalian diel activity and plasticity

Kadambari Devarajan^{1†}, Mason Fidino^{2†}, Zach J. Farris^{3†}, Solny A. Adalsteinsson⁴, Gabriel Andrade-Ponce⁵, Julia L. Angstmann⁶, Whitney Anthonysamy⁷, Jesica Aquino^{8,9}, Addisu Asefa¹⁰, Belen Avila^{8,11}, Larissa L. Bailey¹², Lyandra Maria de Sousa Barbosa¹³, Marcela de Frias Barreto¹⁴, Owain Barton^{15,16}, Chloe E. Bates¹⁷, Mayara Guimarães Beltrão¹⁸, Tori Bird¹⁹, Elizabeth G. Biro⁴, Francesco Bisi²⁰, Daniel Bohórquez²¹, Mark Boyce¹⁶, Justin S. Brashares²², Grace Bullington²³, Phoebe Burns²⁴, Jessica Burr¹, Andrew R. Butler²⁵, Kendall L. Calhoun^{26,27}, Tien Trung Cao²⁸, Natalia Casado⁸, Juan Camilo Cepeda-Duque²⁹, Jonathon D. Cepek³⁰, Adriano Garcia Chiarello³¹, Merri Collins³², Pedro Cordeiro-Estrela³³, Sebastian Costa^{8,34}, Giacomo Cremonesi³⁵, Bogdan Cristescu^{36,37}, Paula Cruz^{8,34,38}, Anna Carolina Figueiredo de Albuquerque^{33,39}, Carlos De Angelo^{8,11}, Cláudia Bueno de Campos^{40,41}, Liana Mara Mendes de Sena⁴², Mario Di Bitetti^{8,34,38}, Douglas de Matos Dias^{29,43}, Duane Diefenbach⁴⁴, Tim S. Doherty^{21,45}, Thais P. dos Santos⁴⁶, Gabriela Teixeira Duarte⁴⁷, Timothy M. Eppley^{48,49,50}, John Erb⁵¹, Carolina Franco Esteves⁴¹, Bryn Evans⁵², Maria L. M. Falcão⁵³, Hugo Fernandes-Ferreira^{13,43,54}, John R. Fieberg⁵⁵, Luiz Carlos Firmino de Souza Filho¹³, Jason Fisher⁵⁶, Marie-Josée Fortin⁵⁷, George A. Gale⁵⁸, Travis Gallo³², Laken S. Ganoe¹, Rony Garcia-Anleu⁵⁹, Kaitlyn M. Gaynor⁶⁰, Tiziana A. Gelmi-Candusso⁵⁷, Phillys N. Gichuru⁶¹, Quimey Gomez^{8,34}, Austin M. Green⁶², Luiza Neves Guimarães¹⁴, Jeffrey D. Haight⁶³, Lavendar R. Harris⁶⁴, Zachary D. Hawn⁶⁵, Jordan Heiman^{66,67}, Huy Quoc Hoang⁶⁸, Sarah Huebner⁶⁹, Fabiola Iannarilli^{55,70}, María Eugenia Iezzi^{8,34,71}, Jacob S. Ivan⁷², Kodi J. Jaspers⁷³, Mark J. Jordan⁷⁴, Jason Kamilar⁷⁵, Mamadou Kane⁷⁶, Mohammad Hosein Karimi⁷⁷, Marcella Kelly⁶¹, Michel T. Kohl⁶⁴, William P. Kuvlesky Jr.¹⁷, Andrew Ladle⁵⁶, Rachel N. Larson⁷⁸, Quy Tan Le⁷⁹, Duy Le⁷⁹, Van Son Le⁸⁰, Elizabeth W. Lehrer², Patrick E. Lendrum⁸¹, Jesse Lewis⁸², Andrés Link⁸³, Diego J. Lizcano⁸⁴, Jason V. Lombardi^{17,85}, Robert Long⁷³, Eva López-Tello⁸⁶, Camile Lugarini⁸⁷, David Lugo⁶¹, Paula MacKay⁷³, Maria Madadi⁷⁷, Rodolfo Assis Magalhães⁴², Seth B. Magle², Ludmila Hufnagel Regis Diniz Maia¹⁴, Salvador Mandujano⁸⁶, Taisiia Marchenkova⁸⁸, Paulo Henrique Marinho⁵³, Laurie Marker³⁶, Julia Martinez Pardo^{8,34}, Adriano Martinoli²⁰, Rodrigo Lima Massara^{14,89}, Juliana Masseloux¹, Dina Matiukhina⁸⁸, Amy Mayer¹, Luis Mazariegos⁹⁰, Maureen R. McClung⁹¹, Alex McInturff⁹², Darby McPhail⁶¹, Amy Merti⁹³, Christopher R. Middaugh⁹⁴, David Miller⁹⁵, David Mills⁹⁶, Dale Miquelle⁹⁷, Vivianna Miritis²¹, Remington J. Moll²⁵, Péter Molnár^{57,98}, Robert A. Montgomery⁹⁹, Toni Lyn Morelli¹⁰⁰, Alessio Mortelliti^{52,101}, Rachael I. Mueller¹⁰², Anna S. Mukhacheva¹⁰³, Kayleigh Mullen¹⁹, Asia Murphy¹⁰⁴, Vance Nepomuceno⁶¹, Dusit Ngoprasert⁵⁸, An Nguyen^{105,106†}, Thanh Van Nguyen^{105,106,107}, Van Thai Nguyen¹⁰⁸, Hoa Anh Nguyen Quang¹⁰⁹, Rob Nipko⁶¹, Ana Clarissa Costa Nobre¹³, Joseph Northrup¹¹⁰, Megan A. Owen⁴⁸, Adriano Pereira Paglia¹⁴, Meredith S. Palmer¹¹¹, Gabriela Palomo-Munoz³², Lain E. Pardo^{96,112}, Chrystina Parks¹¹³, Ana Maria de Oliveira Paschoal^{14,89}, Brent Patterson¹¹⁰, Agustin Paviolo^{8,34}, Liba Pejchar¹², Mary E. Pendergast¹¹⁴, Humberto L. Perotto-Baldivieso^{17,115}, Timofei Petrov⁸⁸, Mairi K. P. Poisson²⁵, Daiana Jeronimo Polli¹¹⁶, Morteza Pourmirzai⁷⁷, Alexander Reebin¹¹⁷, Katie R. Remine⁷³, Lindsey Rich¹¹⁸, Christopher S. Richardson⁹³, Facundo Robino^{8,34}, Daniel G. Rocha^{27,119}, Fabiana Lopes Rocha^{120,121}, Flávio Henrique Guimarães Rodrigues⁴², Adam T. Rohnke¹²², Travis J. Ryan^{6,123}, Carmen M. Salsbury^{6,123}, Heather A. Sander⁷⁸, Nadia Maria da Cruz Santos-Cavalcante¹³, Cagan H. Sekercioglu^{124,125,126}, Ivan Seryodkin¹²⁷, Dede Hendra Setiawan¹²⁸, Shabnam Shadloo⁷⁷, Mahsa Shahhosseini⁷⁷, Graeme Shannon¹⁵, Catherine J. Shier¹²⁹, G. Bradley Smith¹³⁰, Tom Snyder¹³¹, Rahel Sollmann^{27,105}, Kimberly L. Sparks⁹⁴, Kriangsak Sribuarod¹³², Colleen C. St. Clair¹⁶, Theodore Stankowich¹³³, Robert Steinmetz¹³⁴, Cassondra J. Stevenson¹⁶, Sunarto Sunarto¹²⁸, Thilina D. Surasinghe¹³⁵, Svetlana V. Sutyryna¹⁰³, Ronald R. Swaisgood⁴⁸, Atie Taktehrani⁷⁷, Kanchan Thapa¹³⁶

Copyright © 2025 The Authors, some rights reserved; exclusive licensee American Association for the Advancement of Science. No claim to original U.S. Government Works. Distributed under a Creative Commons Attribution NonCommercial License 4.0 (CC BY-NC).

Downloaded from https://www.science.org at Universit degli Studi dell'Insubria on March 20, 2025

Matthew Thorton¹³⁷, Andrew Tilker^{105,106}, Mathias W. Tobler⁴⁸, Van Bang Tran⁷⁹, Jody Tucker⁶⁷, Russell C. Van Horn⁴⁸, Juan S. Vargas-Soto⁹⁸, Karen L. Velásquez-C⁵, Jan Venter¹¹², Eduardo M. Venticinque⁵³, Stijn Verschuere^{36,138}, Erin Wampole¹³⁹, Darcy J Watchorn^{24,140}, Oliver R. Wearn^{141,142}, Katherine C.B. Weiss^{63,143}, Alejandro Welschen¹⁴⁴, Febri Anggriawan Widodo¹²⁸, Jacque Williamson¹⁴⁵, Andreas Wilting¹⁰⁵, George Wittemyer¹², Arturo Zavaleta⁵, Amanda J. Zellmer^{146,147}, Brian D. Gerber^{148,12*†}

Circadian rhythms are a mechanism by which species adapt to environmental variability and fundamental to understanding species behavior. However, we lack data and a standardized framework to accurately assess and compare temporal activity for species during rapid ecological change. Through a global network representing 38 countries, we leveraged 8.9 million mammalian observations to create a library of 14,587 standardized diel activity estimates for 445 species. We found that less than half the species' estimates were in agreement with diel classifications from the reference literature and that species commonly used more than one diel classification. Species diel activity was highly plastic when exposed to anthropogenic change. Furthermore, body size and distributional extent were strongly associated with whether a species is diurnal or nocturnal. Our findings provide essential knowledge of species behavior in an era of rapid global change and suggest the need for a new, quantitative framework that defines diel activity logically and consistently while capturing species plasticity.

INTRODUCTION

Modern eco-evolutionary science classifies animal temporal activity into four distinct diel phenotypes that reflect how species activity is distributed across a 24-hour period, based on light availability (1–3): nocturnal (darkness), crepuscular (low light), diurnal (full light), or cathemeral [multiple phases; (3–8)]. A species' diel phenotype is shaped by their trait combinations (i.e., morphology, physiology, phylogeny, and behavior), making it a core part of their fundamental niche (2, 3, 5–9). Diurnal mammals have evolved trait combinations that differ from nocturnal mammals (7). For example, mammalian eye shape is linked to the length of an animal's daylight activity (10), and the timing of daily rhythms of metabolic and hormonal processes are opposite for nocturnal and diurnal mammals (11). As such, species have evolved traits that likely optimize an individual's fitness when they constrain their activity to certain times of the day (2).

Yet, many species are believed to be flexible in their diel activity patterns (7, 8). Such capacity for variation, hereafter plasticity, in an animal's diel behavior allows individuals to reduce the likelihood of risky environmental conditions or species interactions while accessing resources, thus adapting to interspecific competition, predation, food availability, or anthropogenic activity (2, 6, 12–17). For instance, meso- and large carnivores increase their nocturnal activity in more urbanized areas (18)—likely to avoid hours in which humans are most active (16, 17)—while subdominant carnivores may switch from nocturnal to diurnal to avoid diel-shifting dominants (19). Whether such plasticity has positive fitness outcomes depends on whether diel shifts provide more benefits than costs. Diel plasticity could benefit a species or population to better cope with climate change (20, 21), avoid predation (2, 6, 14, 17, 22), or access anthropogenic resources (23), but at the same time, circadian disruption can lead to negative demographic and health outcomes at the individual and population levels (15, 24).

Scientists have increasingly recognized that to conserve species, we must not only know where they live and what they do but also the time of day they are active (3, 6–9, 12–14, 16, 20, 25). Without this knowledge, we cannot understand a species' habitat (26, 27), a cornerstone of biodiversity conservation (28–30). For example, a protected area that safeguards resources a species needs to persist may be less effective without considering a species diel activity. If

human activity or other disturbances limit a species' ability to access these resources during the time of day they are active (31, 32), then the protected area is not protecting the species, only the resources. Diel plasticity may be a fundamental mechanism by which species adapt to such a disturbance, and thus changes in species diel activity across space or time could serve as an indicator of anthropogenic impact and be a tool for conservation action (33, 34).

In understanding diel activity and plasticity, it is fundamental to define diel phenotypes logically and consistently to evaluate change. Since there has yet to be the technology, methodology, and research network focused on understanding diel behavior, the conceptual and inferential frameworks to evaluate species diel phenotypes and characterize plasticity have varied among taxa, geography, and disciplines. This has inhibited cross-species and system assessments, potentially leading to misleading inference, and thus limited our understanding of the adaptability of species and usefulness of diel activity as an indicator of anthropogenic impact worldwide. By globally sampling wild animal activity and using a novel conceptual and statistical framework to classify a species diel phenotype with uncertainty (35), we can gain a holistic understanding of species' diel activity and plasticity. Doing so provides standardized empirical inference that we have yet to have, so that we better understand this fundamental niche dimension and learn how animal behavior is driven by species traits and environmental change, such as anthropogenic activity (16).

As the Global Animal Diel Activity Project (<https://diel-project.github.io/>; a consortium of 217 collaborators), we curated a camera trap dataset (Fig. 1) that combined 200 camera trap projects and included 20,080 camera sites across 38 countries and six continents. This dataset contains more than 8.9 million images that represent 1.7 million independent records of 445 small-to-large nonvolant mammal species from 67 families. This is one of the largest camera trap datasets in existence, with a combined sampling effort of 10 thousand years of camera-trap days. With this dataset, we addressed two critical questions. First, do conceptually framed empirical diel activity estimates agree with literature-informed classifications of species diel phenotypes? Second, how common is mammalian diel plasticity, and do species traits and anthropogenic factors affect interspecies variation and intraspecies diel plasticity? Our first question aims to evaluate the utility of the literature-informed reference

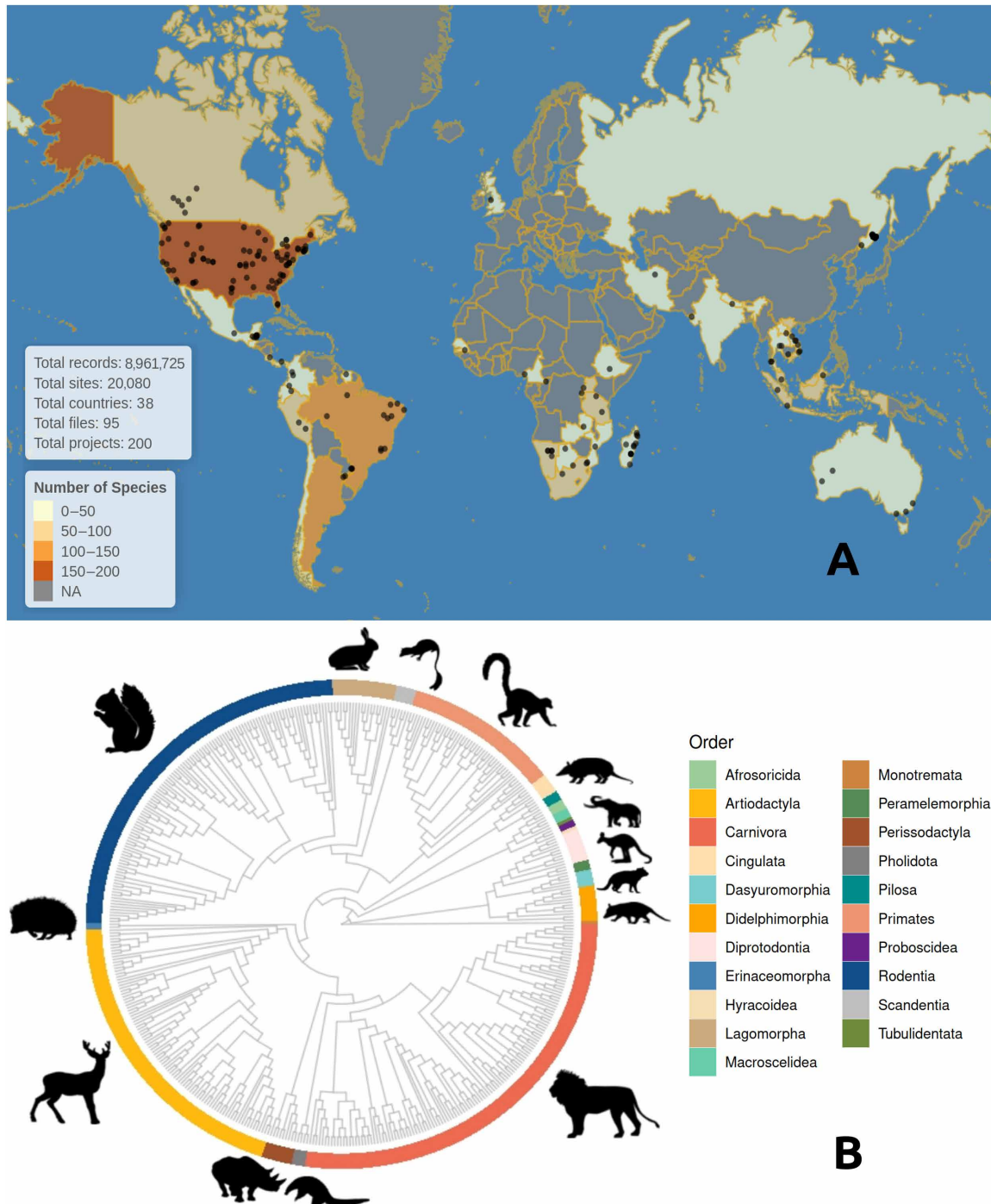


Fig. 1. Visual summary of the consolidated dataset with project countries color-coded by taxonomic richness along with a phylogeny of species in the dataset. (A) Summary of terrestrial coverage of the dataset we have compiled based on more than 8.9 million trail camera photo records spanning 38 countries color-coded by country-specific species richness. The semitransparent black dots on the map represent the average location of each camera trap project, which was summarized from the spatial coordinates of each project's camera trap locations. (B) Phylogeny of 445 nonvolant mammal species from 67 families and 21 orders, with major clades denoted by silhouettes of representative taxa. A subset of this dataset was used for subsequent analysis after data checks. NA, not applicable.

classifications in capturing logical and consistent descriptions of species' diel activity. This is especially important because reference diel classifications are commonly used as data in ecological niche modeling, implicitly assuming that they are meaningfully and consistently defined and thus comparable. Our second question aims to understand the scope and drivers of diel plasticity in a changing world.

Specifically, we (i) provide comparable empirical diel activity estimates for a global distribution of mammals; (ii) contrast these estimates against literature-informed (hereafter reference) definitions; and (iii) quantify patterns and plasticity in diel phenotypes based on species traits (i.e., body size and extent of a species global distribution) as well as environmental (i.e., distance from the equator or hours of daylight) and anthropogenic factors (i.e., global human footprint). For species traits, we tested the predictions that smaller body mass species would most likely be nocturnal (7) and that species with a larger geographic extent would be more plastic because they have greater potential to experience a wide range of environmental conditions. For environmental and anthropogenic factors, we predicted that global human footprint would have the strongest influence on diel phenotypic plasticity (6, 8, 9, 12, 16, 19). Furthermore, on the basis of a global biogeographical analysis (3, 7) and the circadian thermoenergetic hypothesis that posits endotherms are more likely to be resting during colder parts of the day and active during the warmer parts of a day (36–37), we predicted that species further from the equator would be more diurnal or cathemeral. In an era of global human activity and disruption of ecological community dynamics, the biogeography of how animals adapt to environmental conditions through traits and behavioral change is critical to inform conservation actions (3, 6–9, 12–14, 16, 19–22, 25, 31–34).

RESULTS

Species diel activity

Using a standardized process, we binned the 1.7 million species detections into 14,587 analysis units, which represent subsets of a camera project's data that contain the frequency of species detections that occurred during the twilight, daytime, and nighttime (see Materials and Methods for details). The median number of analysis units per country was 169 (minimum = 4, maximum = 5985). The median number of analysis units per species was 10 (minimum = 1, maximum = 693). The median number of independent species detections per analysis unit was 32 (minimum = 10, maximum = 4559).

We estimated the diel phenotype of 445 mammal species across our analysis units. We present findings on supported diel hypotheses for each analysis unit in the Supplementary Materials and full details graphically as an online Shiny application [<https://shiny.celsrs.uri.edu/bgerber/GlobalDiel/>; code can be downloaded at (38)]. Our results can be used as a resource library of empirical findings involving species diel activity where users can examine and download country, project, and species specific results. Summarizing the results for all species with multiple analysis units provides evidence that mammals living in the modern environment commonly alter the diel behavior, using multiple diel phenotypes. Specifically, we found that of the species with two or more analysis units, 60% and 73% of species had more than one diel phenotype as their most supported model using the traditional and general hypothesis sets, respectively. Increasing to five or more analysis units, the proportions of species that used multiple diel phenotypes increased to 72% and 84%, respectively, for the traditional and general hypothesis sets.

Empirical and literature diel comparison

Scientists' past diel categorizations of mammals differed from our standardized empirical diel phenotypes. Agreement between reference diel phenotypes and our results was only well supported (>0.80 probability of reference diel phenotype) for 39% of all species (175 of 445) and moderately to well supported (>0.50 probability of reference diel phenotype) for 65% of all species (291 of 445). This high level of disagreement does not inherently indicate that past diel categorizations are, for the most part, incorrect. We expected disagreement for four primary reasons, most of which are related to possible differences in methodology. First, our quantitatively defined diel phenotypes may not match the qualitatively defined phenotypes historical studies used, which suggests that historical definitions are, at a minimum, inconsistent. Second, data may have been collected in different parts of a species range or under different environmental conditions, both of which could result in differences in a species diel behavior. Third, a species diel phenotype could have shifted since their historical diel phenotype classification due to landscape change or anthropogenic activity. Because both types of differences are related to intraspecific variability in diel behavior, they suggest that species may be more plastic in their diel phenotypes than historically suggested. Our results reinforce this notion. Fourth, diel phenotype classifications could vary because historical studies may have used a variety of sampling methodologies, whereas we only used camera traps. Together, this result suggests that there is a lack of logical clarity or consistency in reference diel phenotypes, which could be corrected by recognizing that many species are plastic in their diel activity and giving diel phenotypes clear, quantitative definitions.

While reference diel categorizations only had 39% agreement with our empirical estimates overall, the amount of agreement varied by reference diel phenotype (Fig. 2). Even when assigning higher prior probabilities to the reference phenotype, there was strong evidence that our quantitatively defined phenotypes differed from those in the reference literature (fig. S1). Furthermore, these

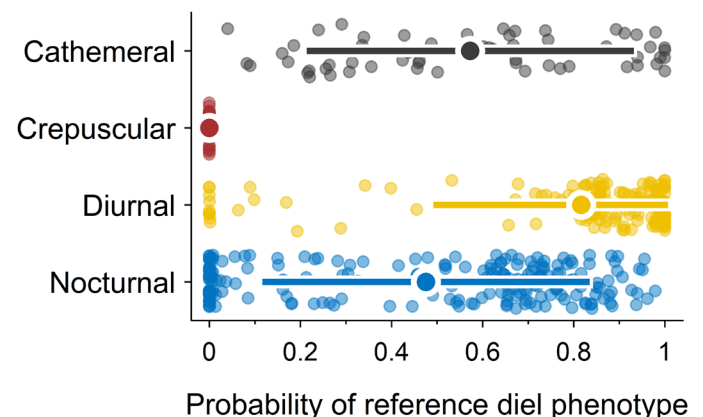


Fig. 2. A comparison of species reference phenotypes with empirical data. Large dots for each reference phenotype (y axis) represent the among-species average probability of support for a given diel phenotype (x axis), horizontal bars are ± 1 SD of species-specific estimates, and smaller dots are species-specific estimates across all of their respective analysis units. For each species' analysis unit, the traditional hypothesis set was fitted with equal prior weight on each diel phenotype. Crepuscularity ($n = 24$) was least accurate at 0%, while nocturnality ($n = 202$) was found to be about 58% accurate. Diurnality ($n = 159$) had the best accuracy at 82%, followed by cathemerality at 57% ($n = 60$) when compared to empirical data.

results did not change when we restricted our analyses by subsetting to species most readily detected by camera traps (ground dwelling and >500 g; fig. S2). Diurnal references were in highest agreement (mean = 82%, $n = 159$), followed by cathemeral references (mean = 57%, $n = 60$). Notably, in contrast to the reference literature, no species was defined as strictly crepuscular because mammals that were highly active during twilight also used other diel phases. This difference emphasizes the need for standardized definitions based on a consistent conceptual framework. When considering a hypothesis set with separation among biphasic and triphasic hypotheses (i.e., general; Fig. 3), we saw that 46% of cathemeral species were more accurately defined as “diurnal-nocturnal” and 11% “crepuscular-nocturnal” (fig. S3). This provides evidence that the standard phenotype descriptions used may be overly general, which could lead to misinterpretation and suggest a need for refinement.

How well a species’ reference phenotype agreed with our estimated standardized phenotypes (Fig. 4) also varied among families. Overall, a few families (e.g., primates in *Cebidae* or *Cercopithecidae*) had many species whose reference phenotypes were in agreement with our categorization, which may be due to how well these species were studied. Of 26 families, only 35% (9 of 26) had a mean agreement

probability of >0.80. The families with the lowest accuracy were dissimilar (e.g., deer, cats, rabbits and hares, and weasels; Fig. 4), which suggests that disagreement occurs across disparate families. Assigning higher prior probability support to the reference phenotype did not change our results (fig. S4) nor did subsetting to species most readily detected by camera traps (ground dwelling and >500 g; fig. S5).

Environmental and anthropogenic factors

We explored whether species traits, environmental factors, and anthropogenic factors were associated with plasticity in species diel phenotypes with a subset of our data. Specifically, we kept non-arboreal species ≥ 500 g that had at least 20 analysis units with 0.80 support for a diel phenotype ($n = 126$ species; see the Supplementary Materials for additional details). We linked the most supported diel phenotype from each analysis unit to environmental and anthropogenic factors using multinomial logistic regression where cathemeral was treated as the baseline category for comparison. Our model included analysis unit-level covariates (distance from the equator, number of daylight hours per day, and global human footprint; see fig. S6 for a graphical display of analysis-unit level variation in latitude and the number of daylight hours per day), species traits (log mass and distributional

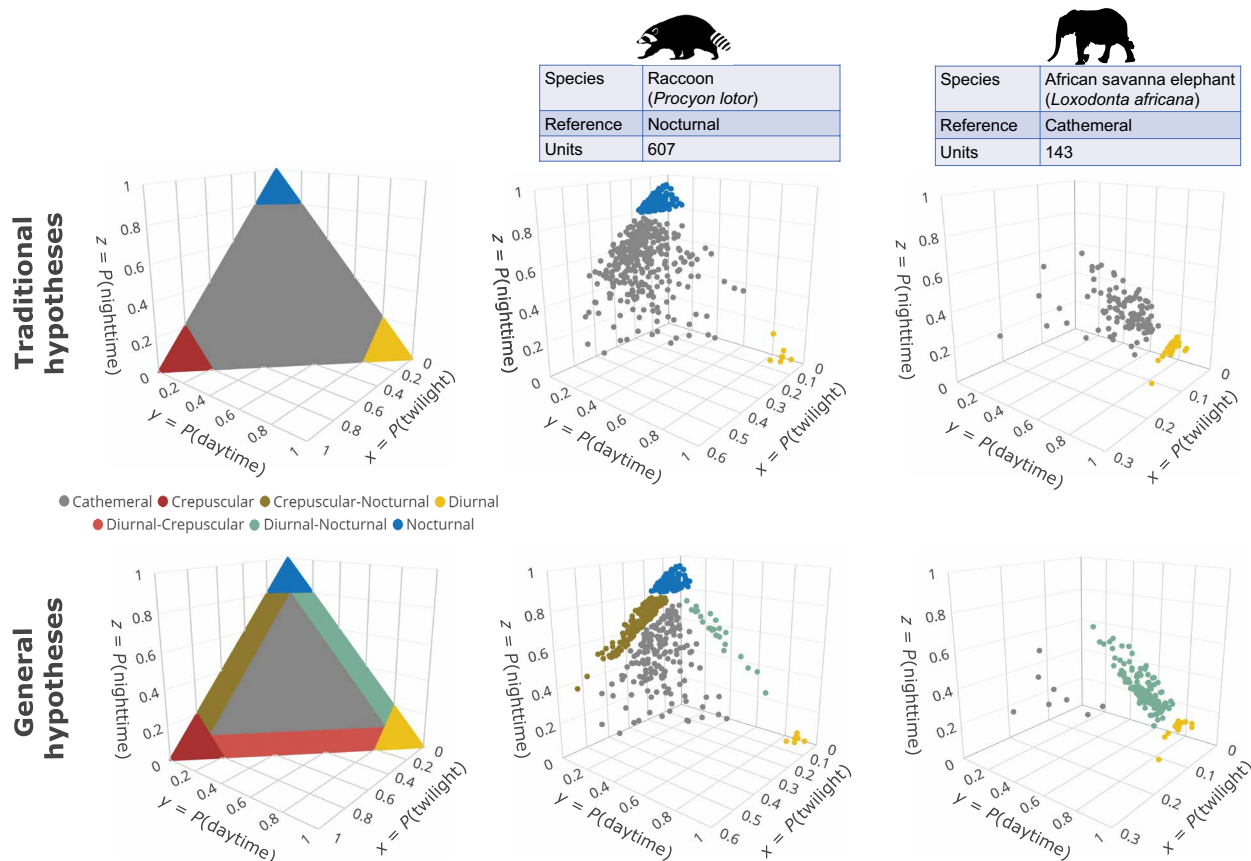


Fig. 3. Diel phenotype hypotheses and their associated probability space for the traditional and general hypothesis sets, as well as empirical support under each hypothesis set for two sample species (raccoon and African savanna elephant). The Traditional hypotheses are composed of diurnal, nocturnal, crepuscular, and cathemeral phenotypes while the General hypotheses encapsulates more phenotypes (crepuscular-nocturnal, diurnal-crepuscular, and diurnal-nocturnal). Subplot axes indicate the probability of activity in twilight (x), daytime (y), and nighttime (z). For the species results, each circle represents an analysis unit’s posterior median probabilities of activity, colored by the supported diel phenotype. For both species we see the loss in information when the Traditional hypotheses are considered while the General provides more specific insights, making a clear separation of biphasic activity (e.g., diurnal-nocturnal) from triphasic activity (e.g., General cathemeral). Note that “Reference” refers to the literature reference classification and “Units” is the number of unique analysis units.

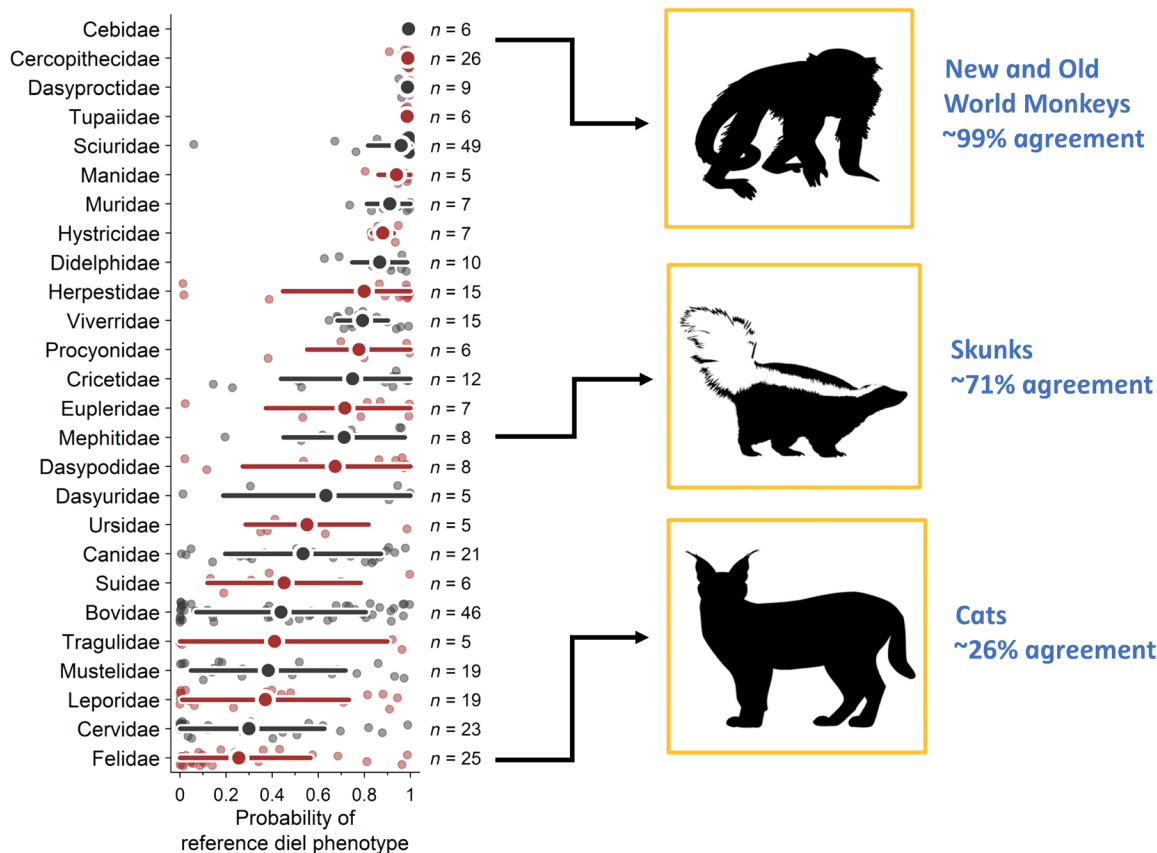


Fig. 4. Probability of agreement for each species with reference phenotype category mapped to phylogeny. Only families with five or more species are plotted (n = the number of species per family that were included in our analysis). Lower probability values mean that, for the corresponding species, there are many analysis units that do not agree with their reference classification. Large dots for each reference phenotype represent the among-species average, horizontal bars are ± 1 SD of species-specific estimates within a family, and smaller dots are species-specific estimates across their respective analysis units. For each species' analysis unit, the traditional hypothesis set was fit with equal prior weight on each diel phenotype.

extent), and the statistical interaction between these covariate classes. Median pairwise correlation ($|r|$) among variables was minimal (mean = 0.05, range = 0.00, 0.43). In addition to these covariates, we included three different kinds of random effects in our model. This included random species-level intercept and slope terms to allow for species-specific responses to analysis unit covariates, random family-level intercepts to account for non-independence among species, and random project-level intercepts to account for non-independence within a camera trap project's analysis units.

Interspecies variation in the size of a mammal's distributional extent, their mass, and their average distance from the equator were all strongly associated with their expected diel phenotype (Fig. 5). The size of a species distributional extent had the strongest association such that mammals with a larger distributional extent were, on average, less likely to be diurnal [$\beta_{\text{diurnal, extent}} = -1.09$, 95% confidence interval (CI) = $-1.92, -0.30$]. Holding other covariates in the model at their mean, a species with a distributional extent of 90,000 km² had a 0.88 probability of diurnality (95% CI = 0.51, 0.98) while a species with a 1 SD increase in extent (450,000 km²) had a 0.70 probability (95% CI = 0.45, 0.87). Making the same comparison for nocturnality, an average species with a 450,000 km² extent was 3.35 times more likely to be nocturnal than a species with a 90,000 km² extent (95%

CI = 1.24, 10.46). This relationship did, however, interact with variation in the number of daylight hours per day. Specifically, we found that species with a small distributional extent were more likely to be nocturnal in areas with less than average daylight hours per day but be diurnal in areas with more than average daylight hours per day ($\beta_{\text{nocturnal, extent} \times \text{daylight}} = 0.16$, 95% CI = 0.02, 0.29; figs. S7 and S8). Conversely, species with a large distributional extent were more likely to be cathemeral across the entire gradient of daylight hours per day (fig. S9). Log body mass was negatively associated with nocturnality ($\beta_{\text{nocturnal, mass}} = -0.80$, 95% CI = $-1.60, -0.02$). Holding other covariates in the model at their mean, a 0.5-kg mammal was 4.5 times more likely to be nocturnal than a 50-kg mammal, which respectively had 0.41 (95% CI = 0.08, 0.83) and 0.09 (95% CI = 0.03, 0.27) probabilities of nocturnality. In agreement with our prediction and the circadian thermoenergetic hypothesis, species who were, on average, further from the equator were less likely to be nocturnal ($\beta_{\text{nocturnal, mean } |\text{latitude}|} = -0.77$, 95% CI = $-1.47, -0.09$) and, as a result of this, more likely to be diurnal or crepuscular. For example, a species that was most commonly sampled along the equator was 1.9 times more likely to be nocturnal (0.41, 95% CI = 0.12, 0.76) than a species most commonly sampled at 20° latitude (0.21, 95% CI = 0.07, 0.45). Last, we also found evidence of a statistical interaction between an analysis unit's distance from the equator and a species

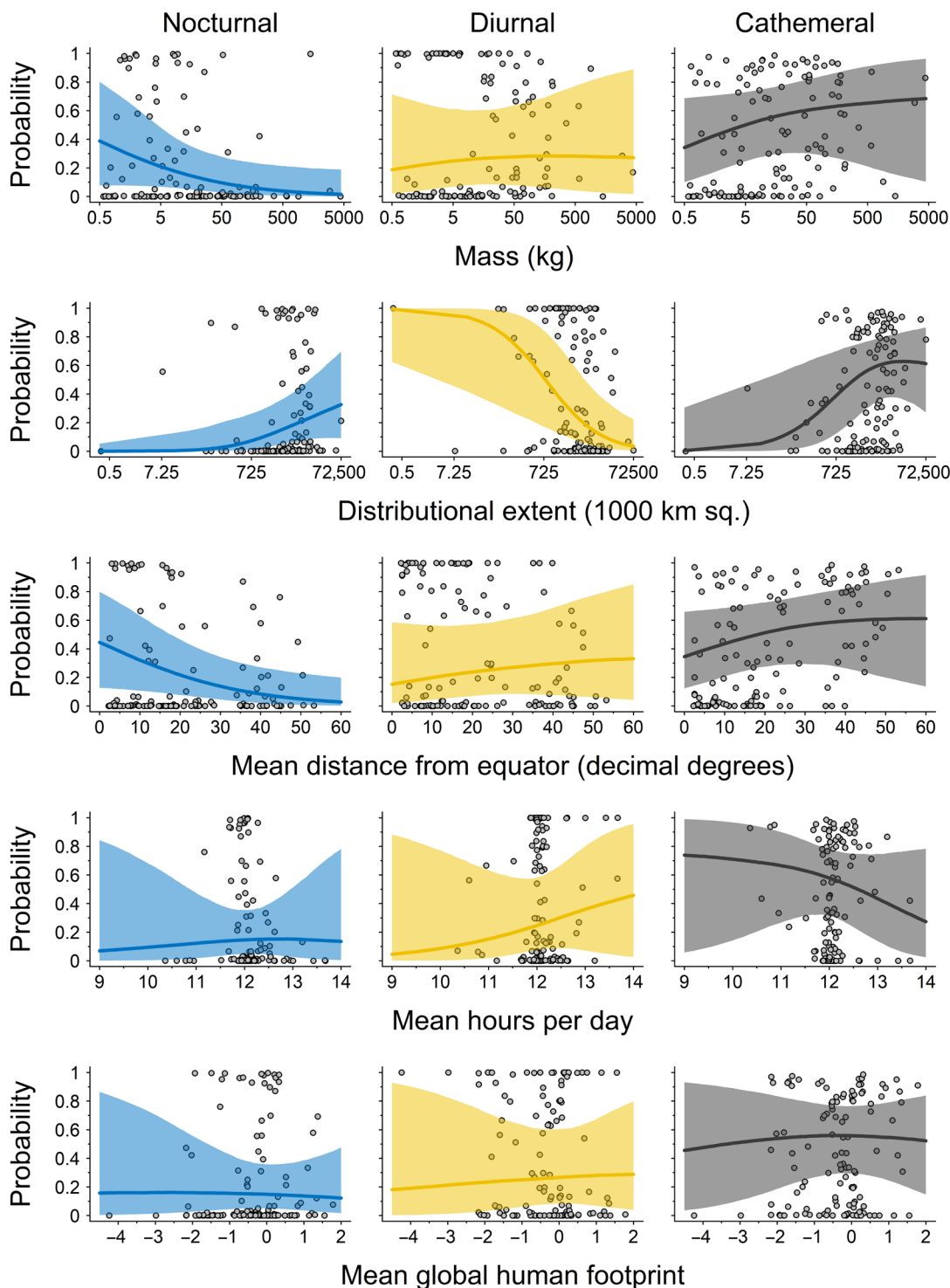


Fig. 5. The predicted probability of a species being nocturnal, diurnal, or cathemeral depending on a species' level trait value, average environmental, or anthropogenic gradient. The solid line and shaded ribbon for each plot respectively represent the median estimate across species and its associated 95% credible interval. Points are species-specific probabilities of nocturnality, diurnality, or cathemerality that were either estimated at their trait value (e.g., mass or distributional extent) or their among analysis-unit average for a given environmental or anthropogenic gradient (e.g., mean distance from the equator, mean hours per day, and mean global human footprint).

average distance from the equator, such that species were more likely to be diurnal if they were located further from the equator than their average distance ($\beta_{\text{diurnal, unit } |\text{latitude}| \times \text{mean } |\text{latitude}|} = 0.91, 95\% \text{ CI} = 0.06, 1.79$). Together, these results demonstrate how both species traits and geography are intricately tied to the diel activity patterns of mammals.

For the 126 species for which we could quantitatively assess intraspecific plasticity across analysis units, 74% of all species (93 species; >0.90 probability) switched diel phenotypes due to variation in distance from the equator (15 species), daylight hours per day (71 species), and global human footprint (38 species; see figs. S10 and S11 for species-specific slope terms). While mammals change their diel phenotype with increasing anthropogenic pressure (16), we found that they do not solely change from diurnal to nocturnal (19). In our analysis, 17 species were more likely to be nocturnal with increasing global human footprint, whereas 2 species were less likely to be nocturnal. Likewise, 5 species were more likely to be diurnal with increasing global human footprint, and 14 species were less likely to be diurnal. Species that became more nocturnal with increasing global human footprint included urban adapted mammals like the striped skunk (*Mephitis mephitis*) as well as other species like snowshoe hare (*Lepus americanus*), gray fox (*Urocyon cinereoargenteus*), North American porcupine (*Erethizon dorsatum*), and crab eating fox (*Cerdocyon thous*; Fig. 6). Overall, the number of daylight hours available per day was the strongest supported covariate of diel phenotype change, but anthropogenic factors and latitudinal differences also resulted in shifts for many species (figs. S10 and S11). As most species switched their diel phenotype along at least one environmental gradient, these changes demonstrate large shifts in when species are active over the 24-hour light-dark cycle.

Last, we quantified species-level diel plasticity as the likelihood that species would switch their diel phenotype along gradients of

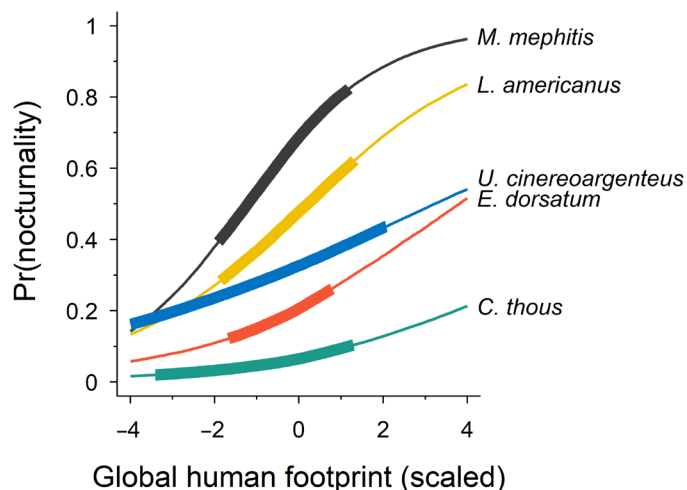


Fig. 6. Roughly a third of the species analyzed demonstrated plasticity in their diel phenotypes along gradients of global human footprint. This plot is a representative example of species that became more nocturnal (y axis) with increasing global human footprint (x axis), which includes the striped skunk (*Mephitis mephitis*), snowshoe hare (*Lepus americanus*), gray fox (*Urocyon cinereoargenteus*), North American porcupine (*Erethizon dorsatum*), and the crab-eating fox (*Cerdocyon thous*). Lines represent median species-specific estimates. The thinner line represents nocturnality predictions for global human footprint values that fall either above or below the range observed across a species' analysis units, whereas the thicker line represents predictions that fall within that range.

latitude, daylight hours per day, and global human footprint. For each species, we predicted the probability of diurnality, nocturnality, and cathemerality along these three gradients and then calculated the maximum expected SD across diel phenotypes for each gradient. We then used this plasticity metric to identify which species were most variable along each gradient and plotted these patterns for the most (figs. S12 to S14) and least (figs. S15 to S17) plastic species.

Together, our results indicate that mammals commonly switch diel phenotypes in the modern global environment. While other studies have demonstrated variability in how much time species are active throughout the 24-hour period (12, 16), we find that these changes can be marked shifts from one phenotype to another (i.e., spending >80% of their time active during one diel phase to >80% in another diel phase). Our results empirically support the hypothesis (7) that the mammalian diel phenotype is plastic.

DISCUSSION

We found that reference diel phenotypes were inconsistent with findings from our conceptually motivated empirical diel estimates for many species and families. Notably, mammals traditionally categorized as crepuscular (active at twilight) are active during other times of the day (e.g., at the hours surrounding twilight), such that the crepuscular phenotype does not describe mammal activity well. This is not to say that mammals do not use the twilight phase but simply do not or cannot concentrate enough of their activity within this limited period of time. What makes our definition of crepuscular unique is that we mathematically define it by the amount of activity within twilight (which it is regularly descriptively defined as) and use the equivalent logical threshold that defines the other two traditional uniphase phenotypes (diurnal, nocturnal; i.e., one diel phase predominantly used), thus enforcing comparability among phenotypes. Of the species that were classified as crepuscular by the reference literature, we found that under the traditional hypothesis set, they were mostly supported as cathemeral (secondly, diurnal) and, under the general hypothesis set, as a mix of cathemeral, diurnal, and diurnal-nocturnal. Given these results, we conclude that traditional categorizations of mammal diel phenotypes should be reevaluated.

Among the other reference diel categorizations (diurnal, nocturnal, and cathemeral), we found considerable variability in species agreement between reference diel phenotypes and our empirically estimated diel phenotypes. These differences are likely due to a mixture of inconsistencies in definitions, meanings of activity, plasticity, and sampling methodologies. Overall, we found only 39% agreement between our results and reference classifications, which further suggests that we need to reevaluate species diel behavior to fully understand their niche and how to conserve them in an anthropogenic world (6, 7, 16, 25). To do this, we need to standardize the definitions of diel phenotypes using quantitative approaches and explicitly recognize that mammal species have multiple diel phenotypes. Furthermore, we should consider whether commonly used diel phenotypes (diurnal, nocturnal, crepuscular, and cathemeral) appropriately capture distinctive diel activity outcomes. We found that more specific diel phenotype designations led to more accurate descriptions of biphasic and triphasic diel activity for many species (e.g., general hypothesis set; Fig. 2). This suggests that the 11.8% of mammals classified as cathemeral (24) could be described more accurately. Thus, our framework can help unify research on this topic, which is sorely needed to better understand how species use diel time in a changing world (6, 9, 16, 25, 39).

We found clear patterns of inter- and intraspecies variation in mammalian diel phenotypes. Among species, mammal's use of day and night varied with their body size, distributional extent, and environmental conditions (Fig. 5). Smaller species were more likely to be nocturnal globally, which agrees with other global research (7), but not in the context of the forested tropics (40). We also found that our results provided support for the thermoenergetic hypothesis in that mammals were more likely to be diurnal or cathemeral in colder environments farther from the equator. Prior research has also associated increased light availability with the distribution of diurnal and crepuscular species (3). While we only found minimal associations between interspecies variation in light availability and diel phenotypes, intraspecies diel plasticity was most strongly associated to light availability. As such, our results provide nuance in that light availability increased plasticity in many species; increasing light availability allowed species with small distributional extents to become more diurnal while species with larger extents become more cathemeral.

While light availability played a substantial role in diel plasticity, we also found that increasing anthropogenic pressure prompted some mammals, primarily North American mammals, to shift to a nocturnal phenotype. This may have occurred for two reasons. First, more than 48% of analysis units came from North America. Thus, North American mammals were well represented and therefore likely candidates to find this relationship. Second, our quantitative delineations for diel phenotypes required a species to spend 80% or more of their activity at night to be quantified as nocturnal. It may be that species increased nocturnality with greater anthropogenic pressure (16) but not to the extent that they would be classified as nocturnal. Regardless, even with our strict diel phenotype definitions, 74% of species expressed plasticity in their diel phenotypes along environmental gradients, which showcases the extent to which species express large-scale behavioral shifts in their diel activity.

The scale and methodology used in our study led to certain limitations that should be recognized. First, camera traps provide a Eulerian or population-based view of the animal community, as most species cannot be reliably individually identified. As such, we could not evaluate inter- or intraindividual variation in diel activity. Both are important sources of variation when considering behavioral plasticity (41). Second, all camera traps in this study were ground based and thus unable to detect burrowing and strictly arboreal species. Species that use multiple strata may have different diel activity patterns across strata levels (42). We investigated whether our results comparing empirical and reference diel classification were sensitive to the inclusion of small mammals < 500 g or arboreal species but found no differences (fig. S2). We might expect high disagreement in certain families that include arboreal species, such as Cercopithecidae, but found there to be high agreement. Third, in comparing our results with reference diel classifications, we were unable to control for differences due to the sampling technique; different techniques (e.g., camera traps versus animal follows) may be measuring different aspects of activity. Whereas the literature classifications potentially combine multiple sampling techniques, which likely leads to amalgamations of meanings of diel activity, we consider data from a single sampling approach (i.e., camera traps) that maintains a consistent definition. Last, animal diel activity is known to change across climatic seasons (43). However, we could not directly model this source of variation in our multinomial logistic

regression analysis due to the scale of our study. More specifically, it was difficult to reliably categorize time periods into distinctive seasons due to variation in the number of climatic seasons at different locations on Earth, variation in elevation across camera trap projects, and interannual variation in the timing of meteorological conditions. We did, however, include the number of daylight hours per day in our model which covaries with seasonality. Despite these limitations, we contend that this analysis sets a solid foundation for researchers to further investigate and define diel phenotypes which will, in turn, make it easier to evaluate how species are or are not modifying their diel behavior in a rapidly changing world.

Diel activity is a fundamental animal behavior that intersects evolution and ecology (1, 2). Despite morphological and physiological adaptations that have been traditionally believed to constrain animal activity (8, 10, 11, 21), our results provide empirical evidence that mammals change their diel activity to adapt to environmental conditions worldwide. By leveraging a global network of scientists and a novel methodological framework that allows logical and comparable inference on diel activity, we have updated our understanding of a fundamental species behavior based on empirical observations. These 14,587 diel estimates, as well as the software used to make them (35), are available to eco-evolutionary researchers to further expand our understanding of how animal morphology and physiology are shaped through evolutionary and ecological processes. As the world is experiencing a time of rapid environmental change, many species are shifting their diel phenotypes with unknown fitness consequences. Furthermore, species that are not shifting diel phenotypes may be incurring worse fitness outcomes by being inflexible in this behavior. Recognizing the fitness consequences of species' diel phenotype plasticity and lack thereof is an important next step to understand the impacts of environmental change and can help direct conservation actions.

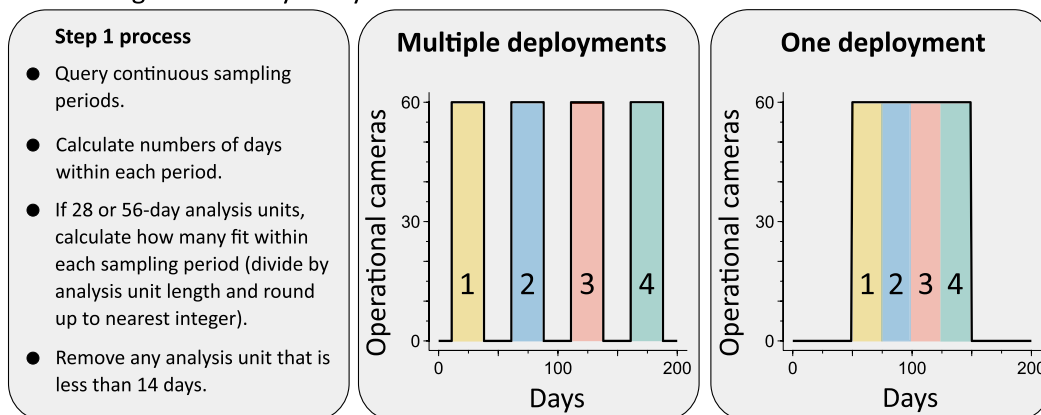
MATERIALS AND METHODS

We used a novel model-based hypothesis framework to define and estimate species' diel phenotype with the "Diel.Niche" R package (<https://github.com/diel-project/Diel-Niche-Modeling>) (35). This framework uses logical and consistent definitions of diel phenotypes and probability theory to evaluate the evidence of support using empirical observations. To use this framework, we discretized the sampling effort from camera trap projects to calculate the frequency of species detections that occurred during the twilight, daytime, and nighttime ($\mathbf{y} = [y_{tw}, y_d, y_n]$). To do so, we identified periods of continuous sampling within each camera trapping project, split these periods of continuous sampling into smaller pieces if they were sufficiently large following a standardized set of rules, and then calculated the frequency of species detections within each temporal subset of a camera project's data (Fig. 7 and see the Supplementary Materials for additional details). For brevity, we refer to these species-specific temporal subsets as analysis units.

To identify periods of continuous sampling for our analysis units, we first calculated the number of operational cameras per day for each camera trap project. Following this, we identified periods where at least one camera was sampling within each camera trap project (see the Supplementary Materials for more information). For example, some projects deployed cameras on specific months of a year and so had multiple deployments punctuated by periods without sampling, while other projects had cameras operational for

Step 1:

Identify possible analysis units based on days cameras were active for a project, starting with 28-day analysis units.

**Step 2:**

For each species, calculate the number of independent events within each possible analysis unit. Retain analysis units for each species that have at least 10 independent events.

Step 3:

Retain names of species where analysis units were created for each project.

Step 4:

For species within a project where analysis units could not be created, repeat steps 1–3 with 56-day analysis units.

Step 5:

For species within a project where 28 or 56-day analysis units could not be created, treat all data within a project as a possible analysis unit and follow steps 2 and 3. These are the "all data" analysis units.

Fig. 7. Examples of how analysis units—which represent a subset of a camera trap project's data—could be generated under different camera trap deployment scenarios and the steps we followed to create them. We created these analysis units to discretize a camera trap project's sampling effort, calculate the frequency of species detections that occurred during the twilight, daytime, and nighttime, and connect a species detection data to spatiotemporal covariates (e.g., global human footprint and mean hours of daylight per day).

the entire length of their study (Fig. 7). Analysis units were first generated from these periods of continuous sampling using a 28-day sampling period, which was chosen because it falls within the minimum suggested sampling effort for camera trap studies (44). To determine the number of analysis units that would fit within a period of continuous sampling for a project, we divided the number of sampled days by the analysis unit length and rounded up to the nearest integer. For example, if a camera trap project had one continuous sampling period of 100 days, we would generate four 25-day analysis units from it (i.e., 100 days of sampling divided by 28 days and then rounded up to the nearest integer). Following this, we tabulated the frequency of detections for each species within each proposed analysis unit per camera trap project.

We first attempted to use 28-day analysis units for all camera trap projects and species but found that this protocol resulted in some species with analysis units that had fewer than 10 species detections, which was insufficient for estimating a species diel phenotype (35).

Therefore, for species with an insufficient sample size, we increased the analysis unit sampling window to either 56 days or to use all the data within a project if a 56-day analysis unit was also insufficient. For example, after generating 28-day analysis units for a camera trap project, if a species did not have any analysis units with at least 10 detections, then we would generate 56-day analysis units for the project instead for that species. Likewise, if a species did not have a 56-day analysis unit with at least 10 detections assigned to it within a camera trap project, then we used all the data within the project to generate one analysis unit for that species within that project. We used this scheme so that we could make inference on both common and rare species. For example, while nearly 95% of our analysis units came from 28-day periods, using the 56-day and all data analysis units added an additional 78 species to our analysis.

Overall, our creation of these analysis units, $\mathbf{y} = [y_{tw}, y_d, y_n]$, leads to using a multinomial distribution to estimate the probability of use within each category ($\mathbf{p} = [p_{tw}, p_d, p_n]$). We added constraints to our

models to represent alternative hypotheses about diel phenotypes (Fig. 2). We fitted models to each analysis unit using two hypothesis sets (traditional and general; Fig. 2 and the Supplementary Materials) that differed in the number of diel phenotypes and their definitions. The traditional hypothesis set aims to capture the general interpretation of the fundamental phenotypes used in the literature (diurnal, nocturnal, crepuscular, and cathemeral). Crepuscular, diurnal, and nocturnal are defined on the basis of having at least 0.80 probability in their respective diel phases. The general hypothesis set defines these phenotypes the same as in the traditional set; the main difference being the definition of cathemerality, where the general hypothesis set aims to differentiate phenotypes in terms of uniphase, biphasic (i.e., two diel phases predominately used; e.g., nocturnal-diurnal), and triphasic activity (i.e., three diel phases predominately used; e.g., cathemeral), while the traditional set only differentiates between uniphase and multiphasic (i.e., more than one diel phase predominantly used) diel activity. As such, the general hypothesis is more specific and clear regarding activity types (35) (for additional details, see the Supplementary Materials). Within each hypothesis set, we used Bayes factors to estimate and compare empirical support via modal probabilities for each diel phenotype hypothesis.

We used the model probabilities for each diel phenotype hypothesis in two subsequent analyses to address our fundamental questions. First, we evaluated whether diel reference categorizations provide fully accurate, logical, and consistent species descriptions by comparing these with our standardized empirical results from the traditional hypothesis set using the model probability of the reference phenotype. This helps frame our results in the context of the current summarized knowledge about species diel activity. Specifically, we made species-level inference on the empirical support of the reference phenotype by modeling the model probabilities of each analysis unit by fitting Bayesian ordered beta regression models (45). These models accommodate the support of the model probabilities (i.e., values from 0 to 1) while allowing us to weight model probabilities by sample size and include nested random effects of camera project within species within family, thus accounting for the nested structure of these data and the dependence within group (see the Supplementary Materials for additional details). There is no standardized framework for how species' reference categorizations were made. Yet, reference categorizations are regularly used to describe species' baseline or preferred activity times and are used as data in ecological niche modeling; the implicit assumptions being that historical species activity categorizations are meaningfully and consistently defined and thus comparable and that species have a single diel phenotype. Our empirical results provide an unprecedented opportunity to determine how much support such assumptions have so that we can refine and enhance the accuracy of species activity categorizations in ecological studies.

The second analysis explored how species traits and analysis unit-level environmental variables were associated with inter- and intraspecific variation in diel phenotypes using a subset of our data. Specifically, we kept non-arboreal species ≥ 500 g that had at least 20 analysis units with 0.80 support for a diel phenotype ($n = 126$ species). We modeled the probability of an analysis unit being supported in a given diel phenotype using a Bayesian multinomial logistic regression model; similar to the previous analysis type, we incorporated a three-way nested random effect of camera project within species within family (see the Supplementary Materials for a full model description).

Supplementary Materials

The PDF file includes:

Supplementary Text
Figs. S1 to S17
Table S1
Legends for data S1 to S8
References

Other Supplementary Material for this manuscript includes the following:

Data S1 to S8

REFERENCES AND NOTES

- N. Kronfeld-Schor, G. Bloch, W. J. Schwartz, Animal clocks: When science meets nature. *Proc. R. Soc. B Biol. Sci.* **280**, 20131354 (2013).
- N. Kronfeld-Schor, M. E. Visser, L. Salis, J. A. van Gils, Chronobiology of interspecific interactions in a changing world. *Phil. Trans. R. Soc. B* **372**, 20160248 (2017).
- J. J. Bennie, J. P. Duffy, R. Inger, K. J. Gaston, Biogeography of time partitioning in mammals. *Proc. Natl. Acad. Sci. U.S.A.* **111**, 13727–13732 (2014).
- L. Schmitz, R. Motani, Nocturnality in dinosaurs inferred from scleral ring and orbit morphology. *Science* **332**, 705–708 (2011).
- S. R. Anderson, J. J. Wiens, Out of the dark: 350 million years of conservatism and evolution in diel activity patterns in vertebrates. *Evolution* **71**, 1944–1959 (2017).
- K. J. Gaston, Nighttime ecology: The “nocturnal problem” revisited. *Am. Nat.* **193**, 481–502 (2019).
- D. T. C. Cox, A. S. Gardner, K. J. Gaston, Diel niche variation in mammals associated with expanded trait space. *Nat. Commun.* **12**, 1753 (2021).
- D. T. C. Cox, K. J. Gaston, Cathemerality: A key temporal niche. *Biol. Rev.* **99**, 329–347 (2024).
- A. E. Mayer, L. S. Gano, C. Brown, B. D. Geber, Diel activity structures the occurrence of a mammal community in a human-dominated landscape. *Ecol. Evol.* **13**, e10684 (2023).
- J. Baker, C. Venditti, Rapid change in mammalian eye shape is explained by activity pattern. *Curr. Biol.* **29**, 1082–1088.e3 (2019).
- L. A. Solt, Y. Wang, S. Banerjee, T. Hughes, D. J. Kojetin, T. Lundasen, Y. Shin, J. Liu, M. D. Cameron, R. Noel, S.-H. Yoo, J. S. Takahashi, A. A. Butler, T. M. Kamenecka, T. P. Burris, Regulation of circadian behaviour and metabolism by synthetic REV-ERB agonists. *Nature* **485**, 62–68 (2012).
- T. Gallo, M. Fidino, B. Gerber, A. A. Ahlers, J. L. Angstmann, M. Amaya, A. L. Concilio, D. Drake, D. Gay, E. W. Lehrer, M. H. Murray, T. J. Ryan, C. C. S. Clair, C. M. Salsbury, H. A. Sander, T. Stankowich, J. Williamson, J. A. Belaïre, K. Simon, S. B. Magle, Mammals adjust diel activity across gradients of urbanization. *eLife* **11**, e74756 (2022).
- K. Rivera, M. Fidino, Z. J. Farris, S. B. Magle, A. Murphy, B. D. Gerber, Rethinking habitat occupancy modeling and the role of diel activity in an anthropogenic world. *Am. Nat.* **200**, 556–570 (2022).
- H. N. Abernathy, D. A. Crawford, R. B. Chandler, E. P. Garrison, L. M. Conner, K. V. Miller, M. J. Cherry, Rain, recreation and risk: Human activity and ecological disturbance create seasonal risk landscapes for the prey of an ambush predator. *J. Anim. Ecol.* **92**, 1840–1855 (2023).
- V. van der Vinne, P. Tachinardi, S. J. Riede, J. Akkerman, J. Scheepe, S. Daan, R. A. Hut, Maximising survival by shifting the daily timing of activity. *Ecol. Lett.* **22**, 2097–2102 (2019).
- K. M. Gaynor, C. E. Hohnowski, N. H. Carter, J. S. Brashares, The influence of human disturbance on wildlife nocturnality. *Science* **360**, 1232–1235 (2018).
- K. M. Gaynor, A. McInturff, J. S. Brashares, Contrasting patterns of risk from human and non-human predators shape temporal activity of prey. *J. Anim. Ecol.* **91**, 46–60 (2022).
- N. Carter, B. Shrestha, J. Karki, N. Pradhan, J. Liu, Coexistence between wildlife and humans at fine spatial scales. *Proc. Natl. Acad. Sci. U.S.A.* **109**, 15360–15365 (2012).
- S. Frey, J. P. Volpe, N. A. Heim, J. Paczkowski, J. T. Fisher, Move to nocturnality not a universal trend in carnivore species on disturbed landscapes. *Oikos* **129**, 1128–1140 (2020).
- C. M. McCain, S. R. B. King, Body size and activity times mediate mammalian responses to climate change. *Glob. Chang. Biol.* **20**, 1760–1769 (2014).
- O. Levy, T. Dayan, W. P. Porter, N. Kronfeld-Schor, Time and ecological resilience: Can diurnal animals compensate for climate change by shifting to nocturnal activity? *Ecol. Monogr.* **89**, e01334 (2019).
- M. P. Veldhuis, T. R. Hofmeester, G. Balme, D. J. Druce, R. T. Pitman, J. P. G. M. Cromsigt, Predation risk constrains herbivores' adaptive capacity to warming. *Nat. Ecol. Evol.* **4**, 1069–1074 (2020).
- J. D. Fischer, S. H. Cleeton, T. P. Lyons, J. R. Miller, Urbanization and the predation paradox: The role of trophic dynamics in structuring vertebrate communities. *BioScience* **62**, 809–818 (2012).

24. A. B. Fishbein, K. L. Knutson, P. C. Zee, Circadian disruption and human health. *J. Clin. Invest.* **131**, e148286 (2021).
25. D. T. C. Cox, A. S. Gardner, K. J. Gaston, Diel niche variation in mammalian declines in the Anthropocene. *Sci. Rep.* **13**, 1031 (2023).
26. M. Kearney, Habitat, environment and niche: What are we modelling? *Oikos* **115**, 186–191 (2006).
27. J. T. Enright, Ecological aspects of endogenous rhythmicity. *Annu. Rev. Ecol. Syst.* **1**, 221–238 (1970).
28. K. Mokany, S. Ferrier, T. D. Harwood, C. Ware, M. Di Marco, H. S. Grantham, O. Venter, A. J. Hoskins, J. E. M. Watson, Reconciling global priorities for conserving biodiversity habitat. *Proc. Natl. Acad. Sci. U.S.A.* **117**, 9906–9911 (2020).
29. M. G. Betts, C. Wolf, W. J. Ripple, B. Phalan, K. A. Millers, A. Duarte, S. H. M. Butchart, T. Levi, Global forest loss disproportionately erodes biodiversity in intact landscapes. *Nature* **547**, 441–444 (2017).
30. D. R. Williams, C. Rondinini, D. Tilman, Global protected areas seem insufficient to safeguard half of the world's mammals from human-induced extinction. *Proc. Natl. Acad. Sci. U.S.A.* **119**, e2200118119 (2022).
31. K. L. Mills, N. C. Harris, Humans disrupt access to prey for large African carnivores. *eLife* **9**, e60690 (2020).
32. A. Guthmann, M. B. Onyango, F. Iannarilli, C. Packer, Livestock activity shifts large herbivore temporal distributions to their crepuscular edges. *J. Anim. Ecol.* **93**, 231–245 (2024).
33. A. L. Gregg, O. Berger-Tal, D. T. Blumstein, L. Angeloni, C. Bessa-Gomes, B. F. Blackwell, C. C. S. Clair, K. Crooks, S. de Silva, E. Fernández-Juricic, S. Z. Goldenberg, S. L. Mesnick, C. Owen, C. J. Schell, A. V. Suarez, R. R. Swaisgood, C. S. Winchell, W. J. Sutherland, Research priorities from animal behaviour for maximising conservation progress. *Trends Ecol. Evol.* **31**, 953–964 (2016).
34. O. Berger-Tal, T. Polak, A. Oron, Y. Lubin, B. P. Kotler, D. Saltz, Integrating animal behavior and conservation biology: A conceptual framework. *Behav. Ecol.* **22**, 236–239 (2011).
35. B. D. Gerber, K. Devarajan, Z. J. Farris, M. Fidino, A model-based hypothesis framework to define and estimate the diel niche via the 'Diel.Niche'R package. *J. Anim. Ecol.* **93**, 132–146 (2024).
36. V. van der Vinne, S. J. Riede, J. A. Gorter, W. G. Eijer, M. T. Sellix, M. Menaker, S. Daan, V. Pilorz, R. A. Hut, Cold and hunger induce diurnality in a nocturnal mammal. *Proc. Natl. Acad. Sci. U.S.A.* **111**, 15256–15260 (2014).
37. R. A. Hut, N. Kronfeld-Schor, V. van der Vinne, H. De la Iglesia, In search of a temporal niche: Environmental factors. *Prog. Brain Res.* **199**, 281–304 (2012).
38. B. D. Gerber, K. Devarajan, Z. J. Farris, M. Fidino, M. Global Animal Diel Activity Results. Version 1.0.0: U.S. Geological Survey software release. Reston, Va. (2024). <https://doi.org/10.5066/P13W3KTE>.
39. K. J. Gaston, A. S. Gardner, D. T. C. Cox, Anthropogenic changes to the nighttime environment. *BioScience* **73**, 280–290 (2023).
40. A. F. Vallejo-Vargas, D. Sheil, A. Sempere-Pascual, L. Beaudrot, J. A. Ahumada, E. Akampurira, R. Bitariho, S. Espinosa, V. Estienne, P. A. Jansen, C. Kayijamahe, E. H. Martin, M. Guimarães, M. Lima, B. Mugerwa, F. Rovero, J. Salvador, F. Santos, W. R. Spironello, E. Uzabaho, R. Bischof, Consistent diel activity patterns of forest mammals among tropical regions. *Nat. Commun.* **13**, 7102 (2022).
41. B. G. Miner, S. E. Sultan, S. G. Morgan, D. K. Padilla, R. A. Relyea, Ecological consequences of phenotypic plasticity. *Trends Ecol. Evol.* **20**, 685–692 (2005).
42. J. K. Haysom, N. J. Deere, A. Mahyudin, M. J. Struebig, Stratified activity: Vertical partitioning of the diel cycle by rainforest mammals in Borneo. *Biotropica* **55**, 991–1005 (2023).
43. A. E. Mayer, L. S. Ganoe, C. Brown, B. D. Gerber, Diel activity structures the occurrence of a mammal community in a human-dominated landscape. *Ecol. Evol.* **13**, e10684 (2023).
44. R. Kays, B. S. Arbogast, M. Baker-Whetton, C. Beirne, H. M. Boone, M. Bowler, S. F. Burneo, M. V. Cove, P. Ding, S. Espinosa, A. L. S. Gonçalves, A. L. S. Gonçalves, C. P. Hansen, P. A. Jansen, J. M. Kolowski, T. W. Knowles, M. G. M. Lima, J. Millsbaugh, W. J. Mc Shea, K. Pacifici, A. W. Parsons, B. S. Pease, F. Rovero, F. Santos, S. G. Schuttler, D. Sheil, X. Si, M. Snider, W. R. Spironello, An empirical evaluation of camera trap study design: How many, how long and when? *Methods Ecol. Evol.* **11**, 700–713 (2020).
45. R. Kubinec, Ordered beta regression: A parsimonious, well-fitting model for continuous data with lower and upper bounds. *Polit. Anal.* **31**, 519–536 (2023).
46. F. Rovero, J. Ahumada, The Tropical Ecology, Assessment and Monitoring (TEAM) Network: An early warning system for tropical rainforests. *Sci. Total Environ.* **574**, 914–923 (2017).
47. M. V. Cove, R. Kays, H. Bontrager, C. Bresnan, M. Lasky, T. Frerichs, R. Klann, T. E. Lee Jr., S. C. Crockett, A. P. Crupi, K. C. B. Weiss, H. Rowe, T. Sprague, J. Schipper, C. Tellez, C. A. Lepczyk, J. E. Fante-Lepczyk, S. LaPoint, J. Williamson, M. C. Fisher-Reid, S. M. King, A. J. Bebeko, P. Chrysafigis, A. J. Jensen, D. S. Jachowski, J. Sands, K. A. MacCombie, D. J. Herrera, M. van der Merwe, T. W. Knowles, R. V. Horan III, M. S. Rentz, L. S. E. Brandt, C. Nagy, B. T. Barton, W. C. Thompson, S. P. Maher, A. K. Darracq, G. Hess, A. W. Parsons, B. Wells, G. W. Roemer, C. J. Hernandez, M. E. Gompper, S. L. Webb, J. P. Vanek, D. J. R. Lafferty, A. M. Bergquist, T. Hubbard, T. Forrester, D. Clark, C. Cincotta, J. Favreau, A. N. Facka, M. Halbur, S. Hammerich, M. Gray, C. C. Rega-Brodsky, C. Durbin, E. A. Flaherty, J. M. Brooke, S. S. Coster, R. G. Lathrop, K. Russell, D. A. Bogan, R. Cliché, H. Shamon, M. T. R. Hawkins, S. B. Marks, R. C. Lonsinger, M. T. O'Mara, J. A. Compton, M. Fowler, E. L. Barthelmeß, K. E. Andy, J. L. Belant, D. E. Beyer Jr., T. M. Kautz, D. G. Scognamiglio, C. M. Schalk, M. S. Leslie, S. L. Nasrallah, C. N. Ellison, C. Ruthven, S. Fritts, J. Tleimat, M. Gay, C. A. Whittier, S. A. Neiswenter, R. Pelletier, B. A. DeGregorio, E. K. Kuprewicz, M. L. Davis, A. Dykstra, D. S. Mason, C. Baruzzi, M. A. Lashley, D. R. Risch, M. R. Price, M. L. Allen, L. S. Whipple, J. H. Sperry, R. H. Hagen, A. Mortelliti, B. E. Evans, C. E. Studds, A. P. K. Sirén, J. Kilborn, C. Sutherland, P. Warren, T. Fuller, N. C. Harris, N. H. Carter, E. Trout, M. Zimova, S. T. Giery, F. Iannarilli, S. D. Higdun, R. S. Revord, C. P. Hansen, J. J. Millsbaugh, A. Zorn, J. F. Benson, N. H. Wehr, J. N. Solberg, B. D. Gerber, J. C. Burr, J. Sevin, A. M. Green, Ç. H. Sekercioglu, M. Pendergast, K. A. Barnick, A. J. Edelman, J. R. Wasdin, A. Romero, B. J. O'Neill, N. Schmitz, J. M. Alston, K. M. Kuhn, D. B. Lesmeister, M. A. Linnell, C. L. Appel, C. A. Rota, J. L. Stenglein, C. Anhalt-Depies, C. Nelson, R. A. Long, K. J. Jaspers, K. R. Remine, M. J. Jordan, D. Davis, H. Hernández-Yáñez, J. Y. Zhao, W. J. McShea, SNAPSHOT USA 2019: A coordinated national camera trap survey of the United States. *Ecology* **102**, e03353 (2021).
48. R. Kays, M. V. Cove, J. Diaz, K. Todd, C. Bresnan, M. Snider, T. E. Lee, J. G. Jasper, B. Douglas, A. P. Crupi, K. C. B. Weiss, H. Rowe, T. Sprague, J. Schipper, C. A. Lepczyk, J. E. Fante-Lepczyk, J. Davenport, M. Z. Farris, J. Williamson, M. C. Fisher-Reid, D. Rezendes, S. M. King, P. Chrysafigis, A. J. Jensen, D. S. Jachowski, K. C. King, D. J. Herrera, S. Moore, M. van der Merwe, J. V. Lombardi, M. Sergeyev, M. E. Tewes, R. V. Horan III, M. S. Rentz, A. Driver, L. R. S. E. Brandt, C. Nagy, P. Alexander, S. P. Maher, A. K. Darracq, E. G. Barr, G. Hess, S. L. Webb, M. D. Proctor, J. P. Vanek, D. J. R. Lafferty, T. Hubbard, J. E. Jiménez, C. McCain, J. Favreau, J. Fogarty, J. Hill, S. Hammerich, M. Gray, C. C. Rega-Brodsky, C. Durbin, E. A. Flaherty, J. Brooke, S. S. Coster, R. G. Lathrop, K. Russell, D. A. Bogan, H. Shamon, B. Rooney, A. Rockhill, R. C. Lonsinger, M. T. O'Mara, J. A. Compton, E. L. Barthelmeß, K. E. Andy, J. L. Belant, T. Petroelje, N. H. Wehr, D. E. Beyer, D. G. Scognamiglio, C. Schalk, K. Day, C. N. Ellison, C. Ruthven, B. Nunley, S. Fritts, C. A. Whittier, S. A. Neiswenter, R. Pelletier, B. A. DeGregorio, E. K. Kuprewicz, M. L. Davis, C. Baruzzi, M. A. Lashley, B. McDonald, D. Mason, D. R. Risch, M. L. Allen, L. S. Whipple, J. H. Sperry, E. Alexander, P. J. Wolff, R. H. Hagen, A. Mortelliti, A. Bolinjar, A. M. Wilson, S. Van Norman, C. Powell, H. Coletto, M. Schauss, H. Bontrager, J. Beasley, S. N. Ellis-Felege, S. R. Wehr, S. T. Giery, C. E. Pekins, S. H. LaRose, R. S. Revord, C. P. Hansen, L. Hansen, J. J. Millsbaugh, A. Zorn, B. D. Gerber, K. Rezendes, J. Adley, J. Sevin, A. M. Green, Ç. H. Sekercioglu, M. E. Pendergast, K. Mullen, T. Bird, A. J. Edelman, A. Romero, B. J. O'Neill, N. Schmitz, R. A. Vandermus, J. M. Alston, K. M. Kuhn, S. C. Hasstedt, D. B. Lesmeister, C. L. Appel, C. Rota, J. L. Stenglein, C. Anhalt-Depies, C. L. Nelson, R. A. Long, K. R. Remine, M. J. Jordan, L. M. Elbroch, D. Bergman, S. Cendejas-Zarelli, K. Sager-Fradkin, M. Conner, G. Morris, E. Parsons, H. Hernández-Yáñez, W. J. McShea, SNAPSHOT USA 2022: A second coordinated national camera trap survey of the United States during the COVID-19 pandemic. *Ecology* **103**, e3775 (2021).
49. A. B. Swanson, M. Kosmala, C. Lintott, R. Simpson, A. Smith, C. Packer, Snapshot Serengeti, high-frequency annotated camera trap images of 40 mammalian species in an African savanna. *Sci. Data* **2**, 150026 (2015).
50. E. A. R. Carvalho Jr., J. C. B. Pezzuti, M. J. de Paula, C. K. M. Lopes, Estação Ecológica da Terra do Meio, version 1, Wildlifeinsights.org (2016); <http://n2t.net/ark:/63614/w12002554>.
51. C. Jorquera, Forestal Arauco Chile, version 1, Wildlifeinsights.org (2013); <http://n2t.net/ark:/63614/w12001436>.
52. M. Lasky, A. W. Parsons, S. G. Schuttler, G. Hess, R. Sutherland, L. Kalies, S. Clark, C. Olfenbuttel, J. Mathews, J. S. Clark, J. Siminitz, G. Davis, J. Shaw, C. Dukes, J. Hill, R. Kays, Carolina critters: A collection of camera-trap data from wildlife surveys across North Carolina. *Ecology* **102**, e03372 (2021).
53. M. Andrianarisoa, Ranomafana, version 1, Wildlifeinsights.org (2010); <http://n2t.net/ark:/63614/w12003032>.
54. M. Lima, F. Santos, Caxiuanã, version 1, Wildlifeinsights.org, version 1 (2010); <http://n2t.net/ark:/63614/w12002641>.
55. W. R. Spironello, Manaus, version 1, Wildlifeinsights.org (2010); <http://n2t.net/ark:/63614/w12002646>.
56. K. Boekee, D. Kenfack, Korup National Park, version 1, Wildlifeinsights.org (2011); <http://n2t.net/ark:/63614/w12002642>.
57. K. Gajapersad, CI Suriname Nature Reserve, version 1, Wildlifeinsights.org (2008); <http://n2t.net/ark:/63614/w12003038>.
58. T. Brncic, Nouabalé Ndoki, version 1, Wildlifeinsights.org (2009); <http://n2t.net/ark:/63614/w12003030>.
59. Organization for Tropical Studies, Volcán Barva, version 1, Wildlifeinsights.org (2008); <http://n2t.net/ark:/63614/w12003020>.
60. J. Salvador, S. Espinosa, Yasuni, version 1, Wildlifeinsights.org (2011); <http://n2t.net/ark:/63614/w12002654>.
61. E. Feagraus, N. Kading, version 2, Wildlifeinsights.org (2009); <http://n2t.net/ark:/63614/w12003034>.

62. C. Fletcher, A. Campos-Arceiz, Pasoh Forest Reserve, version 1, *Wildlifeinsights.org* (2011); <http://n2t.net/ark:/63614/w12002650>.
63. P. Alvarez, Cocha Cashu - Manu National Park, version 1, *Wildlifeinsights.org* (2011); <http://n2t.net/ark:/63614/w12003037>.
64. R. Vasquez, Yanachaga Chimillén National Park, version 1, *Wildlifeinsights.org* (2011); <http://n2t.net/ark:/63614/w12003019>.
65. C. Kayijamahe, E. Uzabab, Virunga Massif, version 1, *Wildlifeinsights.org* (2014); <http://n2t.net/ark:/63614/w12002655>.
66. E. Fegraus, F. Rovero, Udzungwa, version 1, *Wildlifeinsights.org* (2009); <http://n2t.net/ark:/63614/w12003041>.
67. R. Bitariho, Bwindi Impenetrable Forest, version 1, *Wildlifeinsights.org* (2010); <http://n2t.net/ark:/63614/w12003040>.
68. P. A. Jansen, C. M. Montez, N. Meyer, TEAM Barro Colorado Nature Monument - Soberania NP, version 1, *Wildlifeinsights.org* (2000); <http://n2t.net/ark:/63614/w12000318>.
69. B. Ribeiro, S. Velazco, K. Guidoni-Martins, G. Tessoro, L. Jardim, bdc: Biodiversity Data Cleaning. R package version 1.1.4 (2023); <https://CRAN.R-project.org/package=bdc>.
70. E. Pebesma, Simple features for R: Standardized support for spatial vector data. *R. J.* **10**, 439–446 (2018).
71. J. Cheng, B. Karambelkar, Y. Xie, leaflet: Create Interactive Web Maps with the JavaScript 'leaflet' Library. R package version 2.1.2 (2023); <https://CRAN.R-project.org/package=leaflet>.
72. A. Teucher, A. Lutz. R package version 0.3.1 (2019); <https://CRAN.R-project.org/package=lutz>.
73. B. Thieumel, A. Elmarhraoui. Suncalc: Compute sun position, sunlight phases, moon position and lunar phase. R package version 0.5.1 (2019); <https://CRAN.R-project.org/package=suncalc>.
74. D. W. Heck, C. P. Davis-Stober, Multinomial models with linear inequality constraints: Overview and improvements of computational methods for Bayesian inference. *J. Math. Psychol.* **91**, 70–87 (2019).
75. I. Klugkist, H. Hoijtink, The Bayes factor for inequality and about equality constrained models. *Comput. Stat. Data Anal.* **51**, 6367–6379 (2007).
76. H. Aguinis, R. K. Gottfredson, S. A. Culpepper, Best-practice recommendations for estimating cross-level interaction effects using multilevel modeling. *J. Manag.* **39**, 1490–1528 (2013).
77. D. A. Luke, *Multilevel Modeling* (SAGE Publications, 2019), vol. 143.
78. C. E. Milliren, C. R. Evans, T. K. Richmond, E. C. Dunn, Does an uneven sample size distribution across settings matter in cross-classified multilevel modeling? Results of a simulation study. *Health Place* **52**, 121–126 (2018).
79. J. K. Kruschke, *Doing Bayesian Data Analysis: A Tutorial with R, JAGS, and Stan* (Academic Press, ed. 2, 2015).
80. Wildlife Conservation Society - WCS, and Center for International Earth Science Information Network - CIESIN - Columbia University. 2005. Last of the Wild Project, Version 2, 2005 (LWP-2): Global Human Footprint Dataset (Geographic). Palisades, New York: NASA Socioeconomic Data and Applications Center (SEDAC). <https://doi.org/10.7927/H4M61H5F>. Accessed 12-3-2023.
81. H. Wilman, J. Belmaker, J. Simpson, C. de la Rosa, M. M. Rivadeneira, W. Jetz, EltonTraits 1.0: Species-level foraging attributes of the world's birds and mammals. *Ecology* **95**, 2027–2027 (2014).
82. IUCN, The IUCN Red List of Threatened Species. Version 2020-2. Retrieved from <https://www.iucnredlist.org> (2020).
83. P. de Valpine, D. Turek, C. J. Paciorek, C. Anderson-Bergman, D. Temple Lang, R. Bodik, Programming with models: Writing statistical algorithms for general model structures with NIMBLE. *J. Comput. Graph. Stat.* **26**, 403–413 (2017).
84. A. Gelman, J. B. Carlin, H. S. Stern, D. B. Dunson, A. Vehtari, D. B. Rubin, *Bayesian Data Analysis* (CRC Press, 2013).

Acknowledgments: All authors are members of the Global Animal Diel Activity Project. Any use of trade, firm, or product names is for descriptive purposes only and does not imply endorsement by the US Government. We are grateful to the many field biologists that have contributed to collecting the data on each project. For full acknowledgement of individual camera-trapping project funding, see data S6. Additional acknowledgements of support and thanks for the different coauthors and projects are presented here. From the UWIN-UHSP project, we thank A. A. Gamboa and P. Elliott. From the UWIN-Utah and the Wasatch Wildlife Watch projects, we thank K. Barnick, J. Wood, S. Woodbury, J. Gardner, T. Bird, K. Mullen, L. Kogan, A. Benzou, K. Riser, L. Thompson, E. Eriksson, A. Sibul, and the undergraduate students of the Community Engaged Learning Center at the University of Utah, N. D'Souza, T. Cromwell, M. DeBruin, J. Rossell, and the undergraduate-led Cougar Team at Utah State University. From

the Russia project (Russia.Dale.Miquelle), we thank B. I. Litvinov, V. V. Kuzmin, V. A. Velichko, O. A. Yushkin. From the Russia project (Russia.Dina.Matiukhina), we are indebted to V. Storozhuk, A. Titov, G. Sedash, A. Vitkalova, K. Blidchenko, and D. Maximova of Land of the Leopard National Park and Primorsky Krai and A. Reebin of ANO WCS. From the Zambia project, we would like to thank P. Warren and J. Rowan. The Rhode Island project would like to thank Rhode Island's Department of Environmental Management and The Wildlife and Sport Fish Restoration Program. The Myanmar data project would like to thank the members of the Karen Environmental and Social Action Network and the Karen Forestry Department, which was supported by Wildlife Asia, International Union for Conservation of Nature, KfW, World Wildlife Fund–Myanmar, Royal Zoological Society of Scotland, Balcombe Charitable Trust, Wildlife Conservation Society, Wahplaw Wildlife Watch Society, and Full Circle Foundation. The UWIN-MA project would like to thank B. Scully, B. Keegan, J. Taylor, P. Sutton, G. Albanese, T. Puopolo, S. Naser, M. Shave, E. Boyter, and student volunteers from Bridgewater State University, Lesley University, and Mount Auburn Cemetery. The UWIN-MO project would like to thank A. A. Gamboa and P. Elliott. The UWIN-CA project would like to acknowledge the support from the USGS, Disney Conservation Fund, Occidental College, Cygnet Family Foundation, Michael J. Connell Foundation, and Southern California Edison. The Minnesota data project would like to acknowledge the support by the Minnesota Department of Natural Resources and the Wildlife and Sport Fish Restoration Program. From the UK project, we would like to acknowledge the collaboration with the Game and Wildlife Conservation Trust. From the Colombia project, we thank the team members of the Andean Tiger Cat Conservation Project. The Brazil project would like to thank Capes–Fundação Coordenação de Aperfeiçoamento de Pessoal de Nível Superior and the companies Azurit and Statkraft for providing logistical support for R.A.M. T.M.E. of the Madagascar project thanks D. Gibson, D. C. Rasamisoa, and J. Razafindramanana. The Mozambique.Gorongosa project thanks the staff of Gorongosa National Park, numerous students in the UC Berkeley Undergraduate Research Apprenticeship Program, and the volunteers of WildCam Gorongosa. The UWIN-Toronto project thanks M. Mortimer, R. Stumpo, and D. Kumarasinghe. Van Son Le of the Vietnam project (Vietnam.Tilker) thanks Leibniz-Institut für Zoo- und Wildtierforschung (IZW) and Rewild for providing funding and technical advice to enable us to carry out these research activities in Central Vietnam for mammal species and the Silver-backed chevrotain. The South Africa project thanks the Zooniverse volunteers who contributed to this research by annotating Snapshot Safari image data. The Vietnam project (Vietnam.Juliana.Masseloux) thanks Cat Tien National Park for providing permissions and personnel to conduct this research, in particular P. Huu Khanh, P. Hong Luong, and the park rangers who regularly accompanied the field team and revisited cameras. From the USA-PA project, we thank A. Sperfslage and the private landowners who allowed us to survey on their land, as well as the field technicians E. Carrollo, B. Snavelly, T. Vayer, and N. Kluge. From the UWIN-WA project, we thank our partners Woodland Park Zoo and Seattle University, with significant contributions of effort from many Woodland Park Zoo community science volunteers and Seattle University students. The UWIN-AR project thanks Arkansas Game and Fish Foundation and Arkansas Zoological Foundation. The UWIN-Alberta project thanks Alberta Conservation Association and Natural Science and Engineering Research Council of Canada. The UWIN-Bridgewater project thanks B. Scully, B. Keegan, J. Taylor, P. Sutton, G. Albanese, T. Puopolo, S. Naser, M. Shave, E. Boyter, and student volunteers from Bridgewater State University, Lesley University, and Mount Auburn Cemetery. The Peru project thanks the Republic of Peru. The Namibia project thanks W. D. Briers-Louw and T. Bodasing. C.H.S. from the UWIN-Utah project thanks H. Batubay Özkan and B. Watkins for support of the Biodiversity and Conservation Ecology Lab at the University of Utah School. E.M.V. acknowledges receiving CNPq productivity grant number #308543/2021-1. **Funding:** This work was supported by USDA National Institute of Food and Agriculture, Hatch Formula Project 1017848 (K.D.). Funding of individual camera-trap projects is listed in the Supplementary Materials. **Author contributions:** Conceptualization: K.D., M.F., Z.J.F., and B.D.G. Data curation: All authors. Formal analysis: K.D., M.F., and B.D.G. Funding acquisition: B.D.G. Investigation: K.D., M.F., Z.J.F., and B.D.G. Methodology: K.D., M.F., Z.J.F., and B.D.G. Project administration: B.D.G. Resources: B.D.G. and M.F. Software: K.D., M.F., and B.D.G. Supervision: B.D.G. and M.F. Validation: K.D., M.F., Z.J.F., and B.D.G. Visualization: K.D., M.F., and B.D.G. Writing—original draft: K.D., M.F., Z.J.F., and B.D.G. Writing—review and editing: All authors. **Competing interests:** The authors declare that they have no competing interests. **Data and materials availability:** All relevant data and code are provided on the public GitHub repository (<https://github.com/diel-project/global-diel-analysis>) and archived at Zenodo (<https://doi.org/10.5281/zenodo.12725409>). All other data needed to evaluate the conclusions in the paper are present in the paper and/or the Supplementary Materials.

Submitted 30 January 2024
Accepted 23 January 2025
Published 26 February 2025
10.1126/sciadv.ado3843

¹Department of Natural Resources Science, University of Rhode Island, Kingston, RI, USA. ²Conservation and Science Department, Lincoln Park Zoo, Chicago, IL, USA. ³Department of Public Health and Exercise Science, Appalachian State University, Boone, NC, USA. ⁴Tyson Research Center, Washington University in St. Louis, 6750 Tyson Valley Road, Eureka, MO, USA. ⁵Posgrado, Instituto de Ecología A. C. Xalapa, Veracruz, Mexico. ⁶Center for Urban Ecology and Sustainability, Butler University, 4600 Sunset Avenue, Indianapolis, IN, USA. ⁷Department of Basic Sciences, University of Health Sciences and Pharmacy, 1 Pharmacy Place, St. Louis, MO, USA. ⁸Asociación Civil Centro de Investigaciones del Bosque Atlántico, Bertoni 85, Puerto Iguazú, Misiones, Argentina. ⁹Museo Argentino de Ciencias Naturales “Bernardino Rivadavia” (MACN-CONICET), Av. Ángel Gallardo 490, Buenos Aires, Argentina. ¹⁰Ethiopian Wildlife Conservation Authority, Addis Ababa, Ethiopia. ¹¹Instituto de Ciencias de la Tierra, Biodiversidad y Ambiente (ICBIA), Universidad Nacional de Río Cuarto (UNRC)–CONICET, Ruta Nacional 36 Km 601, Río Cuarto, Córdoba, Argentina. ¹²Department of Fish, Wildlife, and Conservation Biology, Colorado State University, Fort Collins, CO, USA. ¹³Laboratório de Conservação de Vertebrados Terrestres (Converte), Universidade Estadual do Ceará, Quixadá, Ceará, Brazil. ¹⁴Laboratório de Ecologia e Conservação, Programa de Pós-graduação em Ecologia, Conservação e Manejo da Vida Silvestre, Departamento de Genética, Ecologia e Evolução, Instituto de Ciências Biológicas, Universidade Federal de Minas Gerais, Avenida Antonio Carlos, 6627, Belo Horizonte, MG 31270-901, Brazil. ¹⁵School of Natural Sciences, Bangor University, Bangor, Gwynedd LL57 2DG, UK. ¹⁶Department of Biological Sciences, University of Alberta, Edmonton, Alberta, Canada. ¹⁷Caesar Kleberg Wildlife Research Institute, Texas A&M University-Kingsville, 700 University Blvd, Kingsville, TX, USA. ¹⁸Museu de Zoologia da Universidade de São Paulo, Avenida Nazaré, São Paulo, SP, Brazil. ¹⁹Utah’s Hogle Zoo, 2600 Sunnyside Avenue, Salt Lake City, UT, USA. ²⁰Environment Analysis and Management Unit–Guido Tosi Research Group, Department of Theoretical and Applied Sciences, University of Insubria, Via J. H. Dunant, 3, 21100 Varese, Italy. ²¹School of Life and Environmental Sciences, The University of Sydney, Camperdown NSW, Australia. ²²Department of Environmental Science, Policy, and Management, University of California Berkeley, 137 Mulford #3114, Berkeley, CA, USA. ²³Environmental and Life Sciences, Trent University, 1600 West Bank Drive, Peterborough, Ontario, Canada. ²⁴Wildlife Conservation and Science, Zoos Victoria, Parkville VIC 3053, Australia. ²⁵Department of Natural Resources and the Environment, University of New Hampshire, 56 College Road, Durham, NH, USA. ²⁶Department of Ecology and Evolutionary Biology, University of California–Los Angeles, Los Angeles, CA, USA. ²⁷Department of Wildlife, Fish and Conservation, University of California–Davis, Davis, CA, USA. ²⁸Institute for Ecology and Conservation of Nature, Vinh University, Vinh City, Vietnam. ²⁹Tiger Cats Conservation Initiative, Finca Las Mejoras, Vereda La Rivera Baja, Comuna 10, Dosquebradas, Colombia. ³⁰Cleveland Metroparks, 9485 Eastland Road, Strongsville, OH, USA. ³¹Departamento de Biología, Faculdade de Filosofia, Ciências e Letras, Universidade de São Paulo (USP), Ribeirão Preto, SP, Brazil. ³²Department of Environmental Science and Technology, College of Agriculture and Natural Resources, University of Maryland, College Park, MD, USA. ³³Laboratório de Mamíferos, Coleção de Mamíferos da UFPP, Departamento de Sistemática e Ecologia, Centro de Ciências Exatas e da Natureza, Universidade Federal da Paraíba, Jardim Universitário, João Pessoa, PB, Brazil. ³⁴Instituto de Biología Subtropical (IBS), Universidad Nacional de Misiones (UNaM)–CONICET, Bertoni 85, Puerto Iguazú, Misiones, Argentina. ³⁵Istituto Oikos E.T.S., Via Crescenzago 1, 20134 Milano, Italy. ³⁶Cheetah Conservation Fund, Otjiwarongo, Namibia. ³⁷Namibia University of Science and Technology, Windhoek, Namibia. ³⁸Facultad de Ciencias Forestales, UNaM, Bertoni 124, Eldorado, Misiones, Argentina. ³⁹Instituto Federal da Paraíba–IFPB, Jardim Cambinho, Cabedelo, PB, Brazil. ⁴⁰Instituto Chico Mendes de Conservação da Biodiversidade–Núcleo de Gestão Integrada, Juazeiro, BA, Brazil. ⁴¹The Institute for the Conservation of Neotropical Carnivores, Av. Horácio Neto, 1030 - Parque Edmundo Zanon, Atibaia, SP, Brazil. ⁴²Programa de Pós-graduação em Ecologia, Conservação e Manejo da Vida Silvestre, Departamento de Genética, Ecologia e Evolução, Instituto de Ciências Biológicas, Universidade Federal de Minas Gerais, Avenida Antonio Carlos, 6627, Belo Horizonte, MG 31270-901, Brazil. ⁴³SETEG Soluções Ambientais, Rua Paulo Firmeza 1349, Fortaleza, Ceará, Brazil. ⁴⁴US Geological Survey, Pennsylvania Cooperative Fish and Wildlife Research Unit, Pennsylvania State University, University Park, PA, USA. ⁴⁵Biodiversity and Conservation Science, Department of Biodiversity, Conservation and Attractions, Woodvale, WA, Australia. ⁴⁶Curso de Ciências Biológicas, Universidade Federal do Vale do São Francisco (UNIVASF), Petrolina, Pernambuco, Brazil. ⁴⁷International Institute for Sustainability, Estrada Dona Castorina, 124 Horto, Rio de Janeiro, RJ 22460-320, Brazil. ⁴⁸Conservation Science and Wildlife Health, San Diego Zoo Wildlife Alliance, Escondido, CA, USA. ⁴⁹Department of Anthropology, Portland State University, Portland, OR, USA. ⁵⁰Wildlife Madagascar, Antananarivo, Madagascar. ⁵¹Minnesota Department of Natural Resources, Grand Rapids, MN, USA. ⁵²Department of Wildlife, Fisheries, and Conservation Biology, University of Maine, 5755 Nutting Hall, Orono, ME, USA. ⁵³Programa de Pós-graduação em Ecologia, Universidade Federal do Rio Grande do Norte (UFRN), Natal, Rio Grande do Norte, Brazil. ⁵⁴Programa de Pós-graduação em Sistemática, Uso e Conservação da Biodiversidade, Universidade Federal do Ceará, Fortaleza, Ceará, Brazil. ⁵⁵Department of Fisheries, Wildlife, and Conservation Biology, University of Minnesota, St. Paul, MN, USA. ⁵⁶School of Environmental Studies, University of Victoria, PO Box 1700 STN CSC, Victoria British Columbia V8W 2Y2, Canada. ⁵⁷Department of Ecology and Evolutionary Biology Department, University of Toronto, 25 Willcocks Street, Toronto, Ontario, Canada. ⁵⁸Conservation Ecology Program and School of Bioresources and Technology, King Mongkut’s University of Technology Thonburi, Bangkok, 10150, Thailand. ⁵⁹Wildlife Conservation Society–Guatemala Program, Avenida 15 de Marzo, Casa #3, Ciudad de Flores, Petén 17001, Guatemala. ⁶⁰Departments of Zoology and Botany, University of British Columbia, 6270 University Boulevard, Vancouver, British Columbia V6T 1Z, Canada. ⁶¹Department of Fish and Wildlife Conservation, Virginia Tech, Blacksburg, VA, USA. ⁶²Science Research Initiative, University of Utah, 1390 Presidents’ Circle, Salt Lake City, UT, USA. ⁶³School of Life Sciences, Arizona State University, 427 E. Tyler Mall, Tempe, AZ, USA. ⁶⁴Warnell School of Forestry and Natural Resources, University of Georgia, 180 E Green Street, Athens, GA, USA. ⁶⁵Point Defiance Zoo and Aquarium, 5400 North Pearl Street, Tacoma, WA, USA. ⁶⁶Wildlife Biology Department, University of Montana, 32 Campus Drive, Missoula, MT, USA. ⁶⁷USDA Forest Service, Rocky Mountain Research Station, 800 East Beckwith Avenue, Missoula, MT, USA. ⁶⁸GreenViet, Danang, Vietnam. ⁶⁹Department of Ecology, Evolution, and Behavior, University of Minnesota Lion Center, Minneapolis, MN, USA. ⁷⁰Department of Ecology and Evolutionary Biology, Yale University, New Haven, CT, USA. ⁷¹Wildlife Ecology and Conservation Department, University of Florida, 110 Newins-Zielger Hall, Gainesville, FL, USA. ⁷²Colorado Parks and Wildlife, 317 W. Prospect Rd., Fort Collins, CO, USA. ⁷³Woodland Park Zoo, 5500 Phinney Ave. N, Seattle, WA, USA. ⁷⁴Department of Biology, Seattle University, 901 12th Ave., Seattle, WA, USA. ⁷⁵Department of Anthropology and Graduate Program in Organismic and Evolutionary Biology, University of Massachusetts, Amherst, MA, USA. ⁷⁶Direction des Parcs Nationaux, MEDD, Route des Pères Maristes, Dakar, Senegal. ⁷⁷Iranian Cheetah Society, Tehran, Iran. ⁷⁸Department of Geographical and Sustainability Sciences, University of Iowa, 316 Jessup Hall, Iowa City, IA, USA. ⁷⁹Southern Institute of Ecology, Institute of Applied Materials Science, Vietnam Academy of Science and Technology, 1D TL29 Thanh Loc Ward, District 12, Ho Chi Minh City, 700000, Vietnam. ⁸⁰Bidoup Nui Ba National Park, Lam Dong, Vietnam. ⁸¹World Wildlife Fund–Northern Great Plains Program, 13 S. Willson Avenue, Bozeman, MT, USA. ⁸²College of Integrative Sciences and Arts, Arizona State University, 6073 Backus Mall, Mesa, AZ, USA. ⁸³Departamento de Ciencias Biológicas, Laboratorio de Ecología de Bosques Tropicales y Primatología, Universidad de los Andes, Cra 1#18a-12, Bogotá, Colombia. ⁸⁴Caipora Foundation, Transversal 8 #9-55. T6, Cajicá, Cundinamarca, Colombia. ⁸⁵Wildlife Health Laboratory, California Department of Fish and Wildlife, Rancho Cordova, CA, USA. ⁸⁶Red de Biología y Conservación de Vertebrados, Instituto de Ecología A. C. Xalapa, Veracruz, Mexico. ⁸⁷Centro Nacional de Pesquisa e Conservação de Aves Silvestres (CEMAVE), Instituto Chico Mendes de Conservação da Biodiversidade (ICMBio), Florianópolis, Santa Catarina, Brazil. ⁸⁸Land of the Leopard National Park, 690068, 00 let Vladivostoku, Ave., 127, Vladivostok, Primorsky Krai, Russia. ⁸⁹Instituto SerraDiCal de Pesquisa e Conservação, Rua José Hemetério de Andrade, 570, Buritis, Belo Horizonte, MG 30493-180, Brazil. ⁹⁰Bioconservancy Foundation, Jardín, Antioquia, Colombia. ⁹¹Department of Biology and Health Sciences, Hendrix College, Conway, AR, USA. ⁹²US Geological Survey, Washington Cooperative Fish and Wildlife Research Unit, School of Environmental and Forest Sciences, University of Washington, Seattle, WA, USA. ⁹³Department of Natural Science and Mathematics, Lesley University, Cambridge, MA, USA. ⁹⁴Research Division, Arkansas Game and Fish Commission, 2 Natural Resources Drive, Little Rock, AR, USA. ⁹⁵Department of Ecosystem Science and Management, Pennsylvania State University, University Park, PA, USA. ⁹⁶Panthera, 8 West 40th Street, 18th Floor, New York, NY, USA. ⁹⁷Wildlife Conservation Society, 2300 Southern Boulevard, the Bronx, New York, NY, USA. ⁹⁸Department of Biological Sciences, University of Toronto Scarborough, 1265 Military Trail, Toronto, Ontario, Canada. ⁹⁹Department of Biology, University of Oxford, 11a Mansfield Road, Oxford OX1 3SZ, UK. ¹⁰⁰US Geological Survey Northeast Climate Adaptation Science Center, Amherst, MA, USA. ¹⁰¹Department of Life Sciences, University of Trieste, Edificio M, Via Licio Giorgieri 10, 34127 Trieste, Italy. ¹⁰²Northwest Trek Wildlife Park, 11610 Trek Drive East, Eatonville, WA, USA. ¹⁰³Sikhote-Alin State Nature Reserve, Primorsky Krai, Russia. ¹⁰⁴Department of Environmental Studies, University of California, Santa Cruz, Santa Cruz, CA, USA. ¹⁰⁵Leibniz Institute for Zoo and Wildlife Research, Berlin, Germany. ¹⁰⁶Re:wild, Austin, TX, USA. ¹⁰⁷Vietnam National University–Central Institute for Natural Resources and Environmental Studies, Hanoi, Vietnam. ¹⁰⁸Save Vietnam’s Wildlife, Ninh Binh, Vietnam. ¹⁰⁹World Wide Fund for Nature, Hue, Vietnam. ¹¹⁰Ontario Ministry of Northern Development, Mines, Natural Resources and Forestry, Trent University, 2140 East Bank Drive, Peterborough, Ontario, Canada. ¹¹¹Fauna and Flora International, The David Attenborough Building, Pembroke Street, Cambridge, CB2 3QZ, UK. ¹¹²Department of Conservation Management, Faculty of Science, Nelson Mandela University, George, 6530, South Africa. ¹¹³ROAM Africa Conservation, 16 Water Street, Williamstown, MA, USA. ¹¹⁴Sageland Collaborative, 824 South 400 West, Suite B119, Salt Lake City, UT, USA. ¹¹⁵Department of Rangeland, Wildlife and Fisheries Management, Texas A&M University, College Station, TX, USA. ¹¹⁶São Paulo State University, Av. 24 A, 1515 - Jardim Bela Vista, Rio Claro, SP, Brazil. ¹¹⁷ANO Wildlife Conservation Society, Vladivostok, Russia. ¹¹⁸California Department of Fish and Wildlife, Sacramento, CA, USA. ¹¹⁹Department of Biology, Southern Nazarene University, Bethany, OK, USA. ¹²⁰IUCN SSC Center for Species Survival Brazil, Foz do Iguaçu, Paraná, Brazil. ¹²¹Programa de Pós-graduação em Ciências Biológicas–PPGCB, Universidade Federal da Paraíba, João Pessoa, Paraíba, Brazil. ¹²²Department of Wildlife, Fisheries and Aquaculture, Mississippi State University, Central MS Research and Extension Center, 1320

Seven Springs Rd, Raymond, MS, USA. ¹²³Department of Biological Sciences, Butler University, 4600 Sunset Avenue, Indianapolis, IN, USA. ¹²⁴School of Biological Sciences, University of Utah, 257 South 1400 East, Salt Lake City, UT, USA. ¹²⁵Department of Molecular Biology and Genetics, Koc University, Istanbul, Türkiye. ¹²⁶KuzeyDoğa Derneği, İstasyon Mahallesi, İsmail Aytemiz Caddesi, 36200 Kars, Türkiye. ¹²⁷Pacific Geographical Institute, Far-Eastern Branch, Russian Academy of Sciences, Vladivostok, Russia. ¹²⁸World Wide Fund for Nature (WWF) Indonesia, Central Sumatra, Pekanbaru, Indonesia. ¹²⁹Edmonton Valley Zoo, City of Edmonton, Saito Centre, 3315 Buena Vista Road, Edmonton Alberta, T5R 5R1, Canada. ¹³⁰USDA Forest Service, Northern Regional Office, 26 Fort Missoula Rd, Missoula, MT, USA. ¹³¹Seneca Park Zoo Society, Rochester, NY, USA. ¹³²Khlong Saeng Wildlife Research Station, Department of National Park, Wildlife and Plant Conservation, Paholyotin Road, Chatuchak, Bangkok 10110, Thailand. ¹³³Department of Biological Sciences, California State University Long Beach, 1250 Bellflower Blvd, Long Beach, CA, USA. ¹³⁴World Wildlife Fund Thailand, Pisit Building, 11 Pradiphat Soi 10 Pradiphat Road, Phayathai, 10400, Bangkok, Thailand. ¹³⁵Department of Biological Sciences, Bridgewater State University, Bridgewater, MA, USA. ¹³⁶World Wildlife Fund (WWF) Nepal, Kathmandu, Bagmati Province, Nepal. ¹³⁷Independent researcher, Otjiwarongo, Otjiwarongo, Namibia. ¹³⁸University of Antwerp, Antwerp, Belgium. ¹³⁹Washington Department of Fish and Wildlife, Olympia, WA, USA. ¹⁴⁰School of Life and Environmental Sciences (Burwood Campus), Deakin University, Geelong, VIC, Australia. ¹⁴¹Fauna and Flora International–Vietnam Programme, 118 Tu Hoa, Tay Ho, Hanoi, Vietnam. ¹⁴²Institute of Zoology, Zoological Society of London, Regent's Park, London, NW1 4RY, UK. ¹⁴³Department of Environmental Science and Policy, Marist College, Poughkeepsie, NY, USA. ¹⁴⁴Instituto de ecología, genética y evolución de Buenos Aires. Universidad de Buenos Aires, CONICET–UBA, Buenos Aires, Argentina. ¹⁴⁵Wildlife Habitat Council, 9466 Georgia Ave. PMB 2115, Silver Spring, MD, USA. ¹⁴⁶Department of Biology, Occidental College, 1600 Campus Rd., Los Angeles, CA, USA. ¹⁴⁷Arroyos and Foothills Conservancy, PO Box 1, Pasadena, CA, USA. ¹⁴⁸US Geological Survey, Colorado Cooperative Fish and Wildlife Research Unit, Fort Collins, CO, USA.

*Corresponding author. Email: brian.gerber@colostate.edu

†These authors contributed equally to this work.

#Present address: Technische Universität Berlin, Berlin, Germany.